

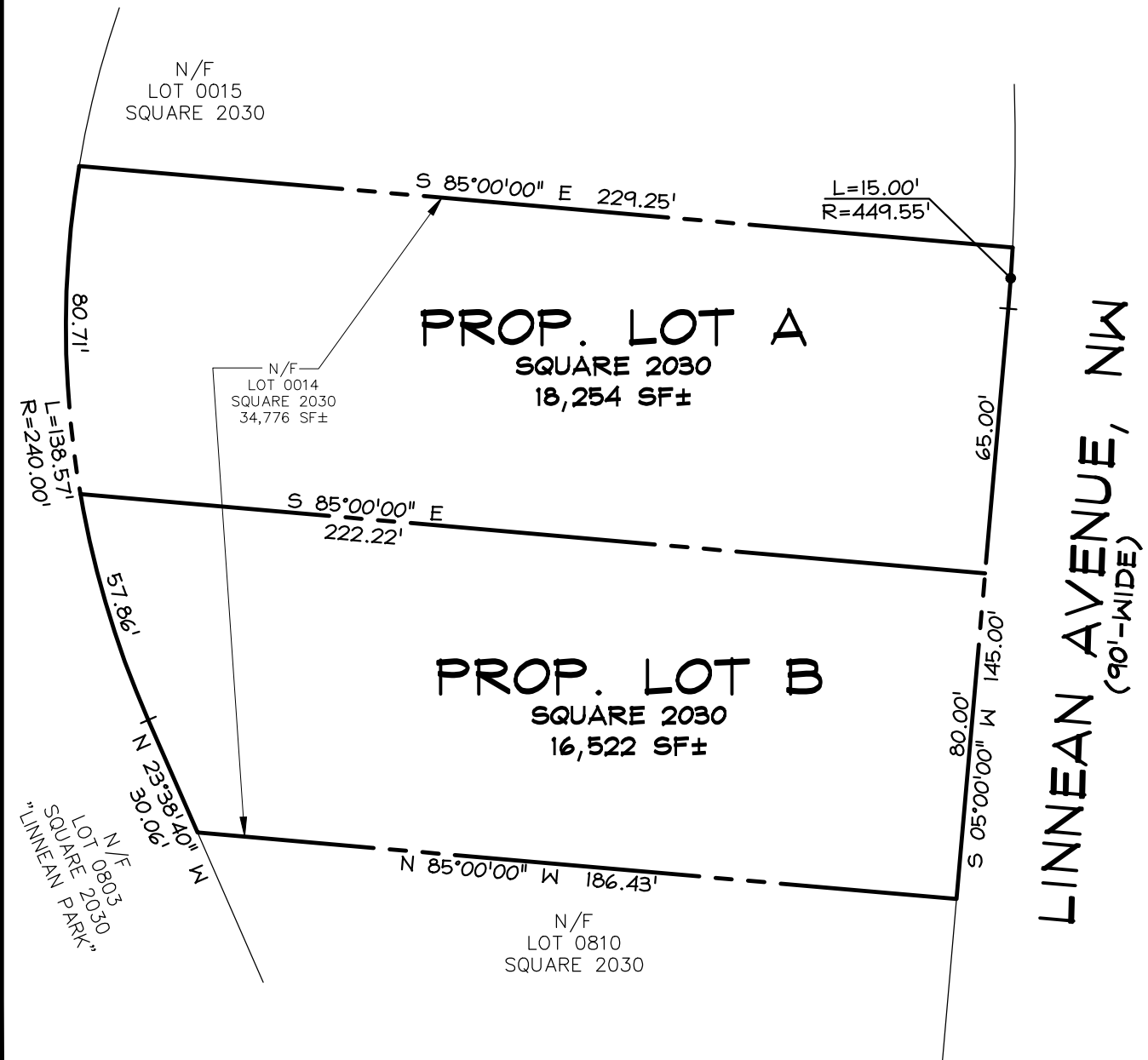
# SUBDIVISION SKETCH



CAS Engineering-DC, LLC  
 Attn: David C. Landsman, PE  
 4836 MacArthur Boulevard, NW  
 2nd Floor  
 Washington, DC 20007  
 (202) 393-7200 office  
 dcpermits@casengineering.com

Proposed 2-Lot Subdivision  
 Lot 0014  
 Square 2030

Prepared for:  
 Brush Arbor Homes



Zone: R-8