

PRINT DATE 8/24/2016 12:33:17 PM

ISSUE DATE
PEER REVIEW / PERMIT SET 06/29/2016

REV	DATE	DESCRIPTION
-----	------	-------------

PROJECT TITLE
TYBER PLACE -
VOLUME 1

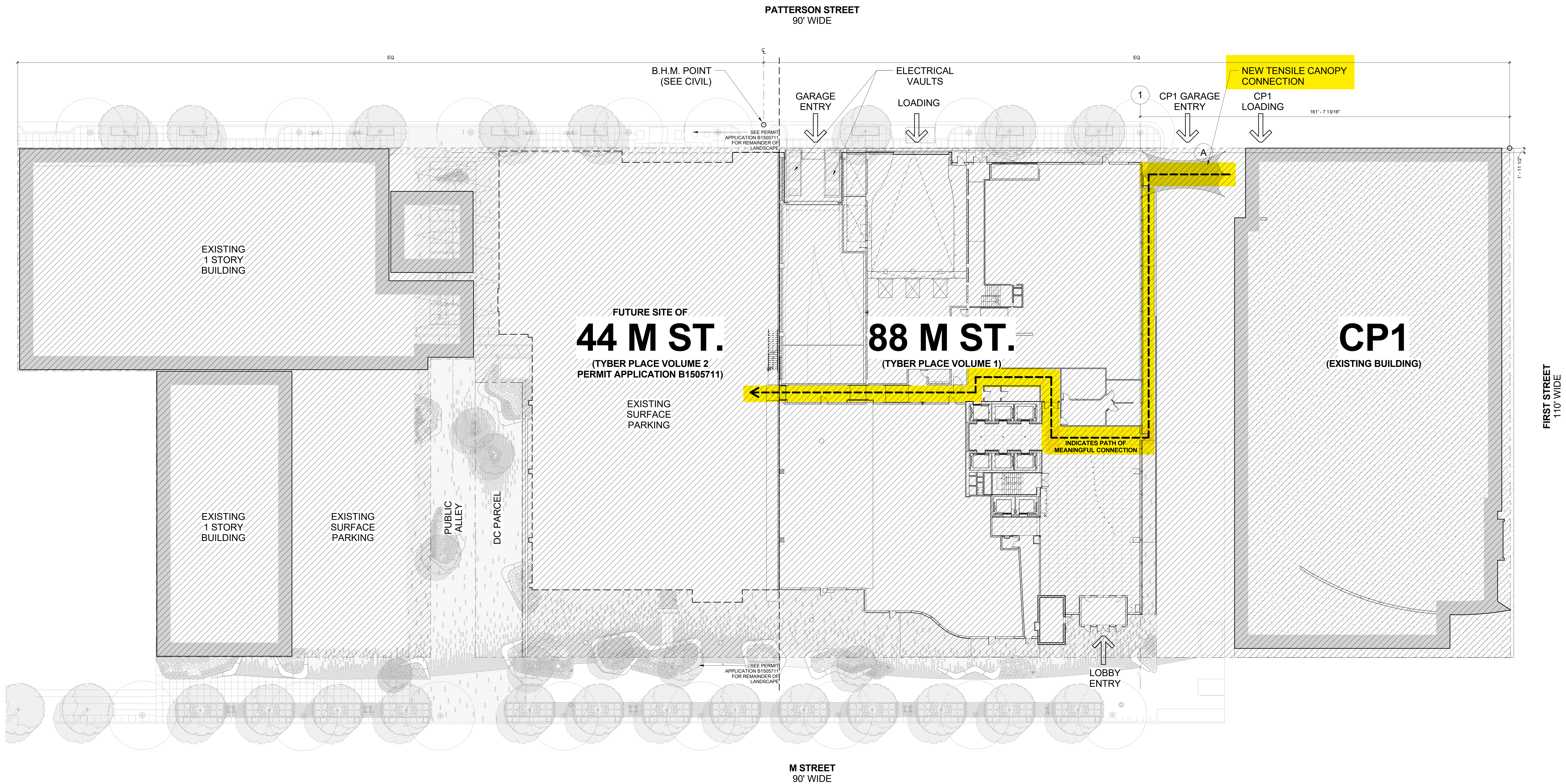
88 M St NE (NoMA),
Washington, DC 20002
PROJECT NO. 311102.23

DRAWING TITLE
ARCHITECTURAL
SITE PLAN

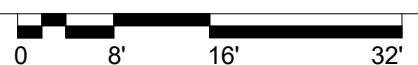
DRAWN BY PFS, DM
CHECKED BY EU
QA REVIEWED BY

DRAWING NUMBER
A100

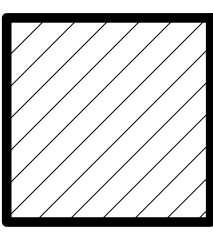
SHEET OF
REVIT FILE



1 ARCHITECTURAL SITE PLAN
1/16" = 1'-0"

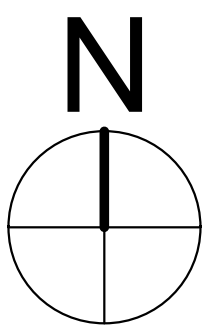


KEY



SINGLE LOT OF RECORD
(SEE CIVIL DRAWINGS
FOR MORE INFO)

AREA 132,586 SF



FOR INFORMATIONAL PURPOSES ONLY

KEYNOTE #	DESCRIPTION
EL-01	ARCHITECTURAL PRECAST PANELS - COLOR TO BE MEDIUM GREY WITH SMOOTH FINISH TO MATCH ARCHITECT'S SAMPLE ARBAN & CAROSI SAMPLE# 01-06-12-12.
EL-04A	STONE CLAD CURB (8" HIGH MINIMUM), JET MIST POLISHED
EL-09	TENSILE CANOPY STRUCTURE BY AAACM GREEN WARRIOR OR SIM. (PROVIDE ALLOWANCE)
EL-13	2 SIDED VERTICAL STRUCTURAL SILICON GLAZED WINDOW WALL SYSTEM. GLAZING = 1" INSULATED UNIT (1/4" + 1/2" ARGON FILLED SPACE + 1/4"). VIRACON VRE1-46. SEE 10/A336 FOR TYPICAL GLASS SILK SCREENED FRIT DETAIL. FRAMING = ICR 2 1/2" x 5 1/2" SYSTEM BY OLD CASTLE. NFRC CERTIFIED, AIR INFILTRATION < 06 CFM/SQFT PER ASTM E283. ALUMINUM PAINTED 2 COAT FLUOROPOLYMER. COLOR TO MATCH ARCHITECT'S SAMPLE: MEDIUM GRAY
EL-16	EIFS COLOR TO MATCH ARCHITECT'S SAMPLE: MEDIUM GRAY TO MATCH PRECAST, SMOOTH SAND FINISH TO MATCH PRECAST WITH PREFINISHED METAL COPING, COLOR TO MATCH ARCHITECT'S SAMPLE: MEDIUM GRAY
EL-18	PAINTED PIPE RAIL SYSTEM
EL-23	METAL TRIM, ALUMINUM PAINTED 2 COAT FLUOROPOLYMER. COLOR TO MATCH ARCHITECT'S SAMPLE: MEDIUM GRAY

GENERAL ELEVATION NOTES

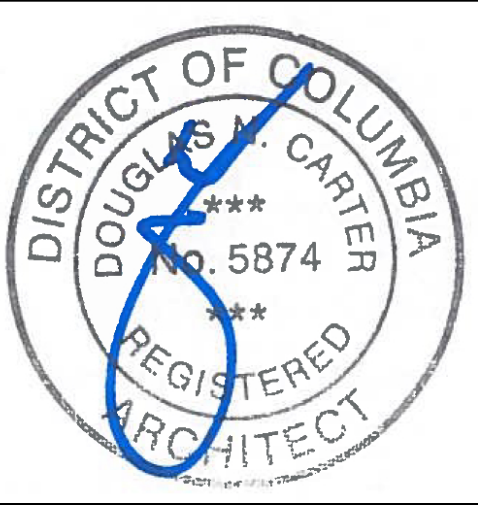
- SEE SHEET G001 FOR DRAWING INDEX, ABBREVIATIONS AND GRAPHIC SYMBOLS
- SEE SHEET A003 FOR LOUVER TYPES
- SEE SHEETS A335 & A336 FOR WINDOW TYPE SIZES, DETAILS, ETC

GLAZING NOTES

- ALL EXTERIOR GLAZING TO BE TEMPERED
- SEE SHEET A301 FOR EXTERIOR GLAZING SPECIFICATIONS

dc
DESIGN

DAVIS
CARTER
SCOTT
Architects
Interior Architecture
Land Planning
Suite 800
8414 Westwood Center Dr.
Tysons, Virginia 22102
P 703.554.9215
F 703.823.0819
www.dcsdesign.com



PRINT DATE 8/24/2016 9:02:35 AM

ISSUE DATE

PEER REVIEW / PERMIT SET 06/29/2016

A 08/05/2016 PEER REVIEW 1

REV DATE DESCRIPTION

PROJECT TITLE
TYBER PLACE -
VOLUME 1

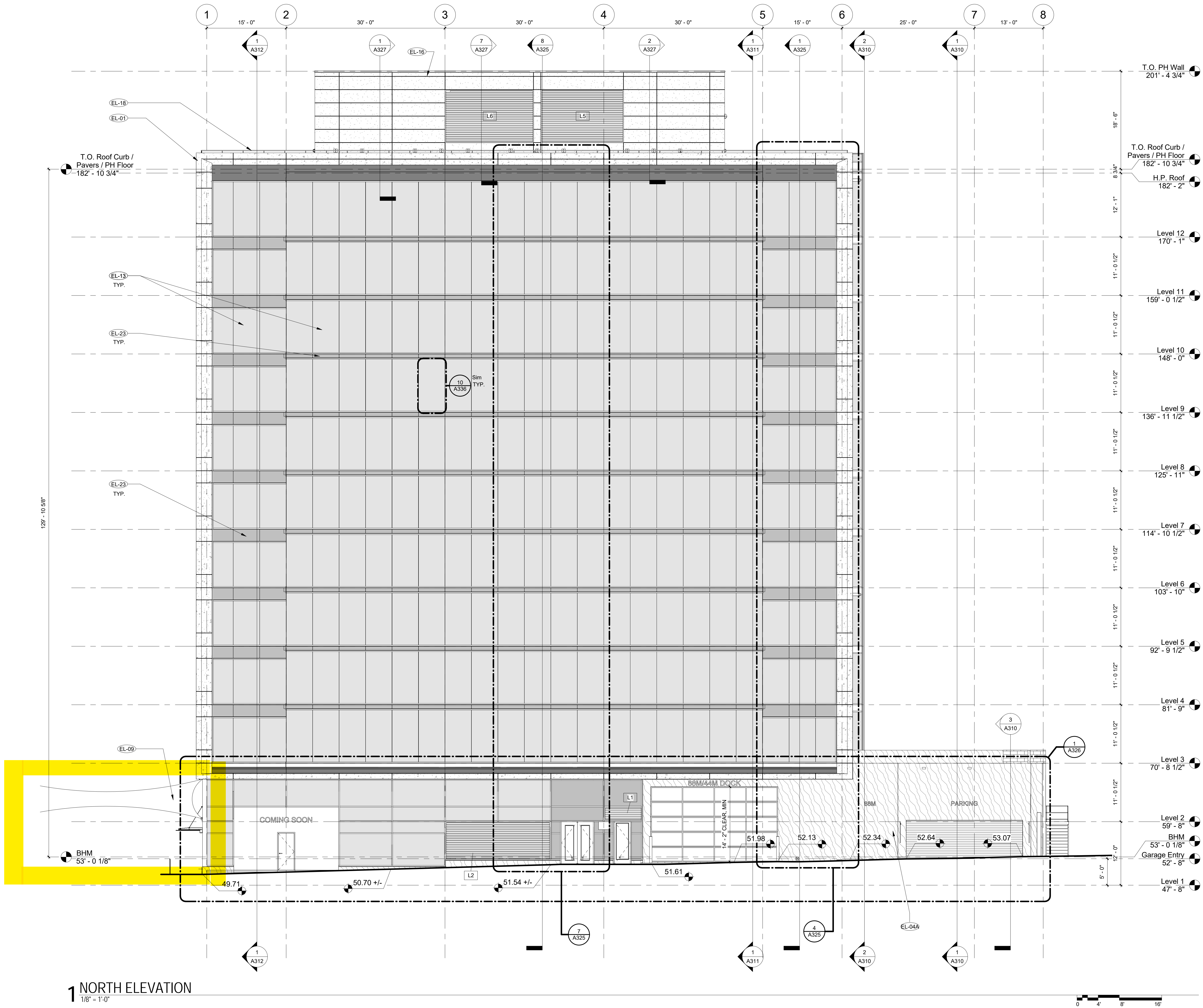
88 M St NE (NoMA),
Washington, DC 20002
PROJECT NO. 311102.23

DRAWING TITLE
NORTH
ELEVATION

DRAWN BY PFS, DM
CHECKED BY EU
QA REVIEWED BY

DRAWING NUMBER
A302

SHEET OF
REVIT FILE



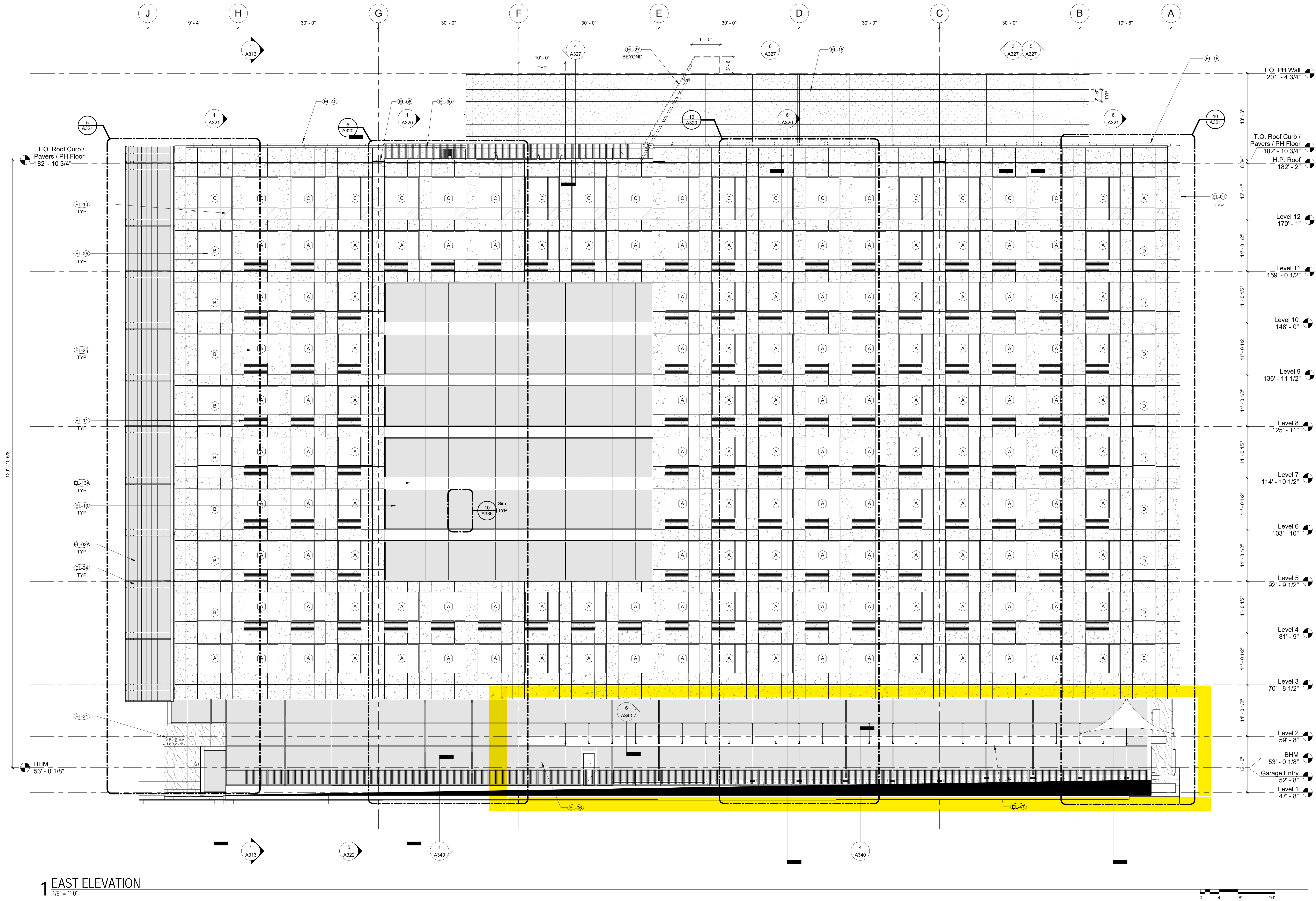
KEYNOTE #	DESCRIPTION
EL-01	ARCHITECTURAL PRECAST PANELS - COLOR TO BE MEDIUM GREY WITH SMOOTH FINISH TO MATCH ARCHITECT'S SAMPLE ARBAN & CAROSI SAMPLE# 01-06-12-12
EL-02A	2 SIDED VERTICAL STRUCTURAL SILICON GLAZED CURTAIN WALL SYSTEM. GLAZING = 1" INSULATED UNIT (1/4" + 1/2" ARGON FILLED SPACE + 3/8"). VIRACON VRE1-46. SEE 10/A335 FOR TYPICAL GLASS SILK SCREENED FRIT DETAIL. FRAMING = RELIANCE 2 1/2" x 7 1/4" SYSTEM BY OLD CASTLE, NFRC CERTIFIED, AIR INFILTRATION <06 CFM/SQFT PER ASTM E283. ALUMINUM PAINTED 2 COAT FLUOROPOLYMER. COLOR TO MATCH ARCHITECT'S SAMPLE: MEDIUM GRAY
EL-06	CAPTURED GLAZED CURTAIN WALL SYSTEM. GLAZING = 1" INSULATED UNIT, TEMPERED OR LAMINATED, PPG SOLARBAN 67 STARPHIRE ULTRA CLEAR, UP TO 10' LONG & 5' HIGH. FRAMING = MODIFIED RELIANCE 2 1/2" x 10 1/8" DEEP SYSTEM (TO SUPPORT UP TO 10' LONG & 5' HIGH GLAZING) UP TO 20'-0" WITHOUT LATERAL BRACING.
EL-08	THRU-WALL ROOF SCUPPER
EL-10	GLASS SPANDREL PANEL: PPG COLORED GLAZING OUTER LIGHT WITH INTERIOR LITE PAINTED LIGHT GREY ON SURFACE #3, 1/4" 1/2" 1/4". COLOR TO MATCH ARCH SAMPLE.
EL-11	ARCHITECTURAL PRECAST FLUTED PANEL - COLOR TO MATCH ARCHITECT'S SAMPLE: MEDIUM GRAY ARBAN & CAROSI SAMPLE# 01-06-12-12.
EL-13	2 SIDED VERTICAL STRUCTURAL SILICON GLAZED WINDOW WALL SYSTEM. GLAZING = 1" INSULATED UNIT (1/4" + 1/2" ARGON FILLED SPACE + 1/4"). VIRACON VRE1-46. SEE 10/A336 FOR TYPICAL GLASS SILK SCREENED FRIT DETAIL. FRAMING = ICR 2 1/2" x 5 1/2" SYSTEM BY OLD CASTLE, NFRC CERTIFIED, AIR INFILTRATION <06 CFM/SQFT PER ASTM E283. ALUMINUM PAINTED 2 COAT FLUOROPOLYMER. COLOR TO MATCH ARCHITECT'S SAMPLE: MEDIUM GRAY
EL-13A	INTEGRATED ALUMINUM SLAB COVER BY OLDCASTLE, PAINTED 2 COAT FLUOROPOLYMER. COLOR TO MATCH ARCHITECT'S SAMPLE: MEDIUM GRAY
EL-16	EIFS COLOR TO MATCH ARCHITECT'S SAMPLE: MEDIUM GRAY TO MATCH PRECAST, SMOOTH SAND FINISH TO MATCH PRECAST WITH PREFINISHED METAL COPING. COLOR TO MATCH ARCHITECT'S SAMPLE: MEDIUM GRAY
EL-18	PAINTED PIPE RAIL SYSTEM
EL-24	SHADOW BOX SYSTEM. COLOR TO MATCH ARCHITECT'S SAMPLE: MEDIUM GRAY SHADOW BOX/MTL TRIM-CUSTOM
EL-25	WINDOW SYSTEM. GLAZING = 1" INSULATED UNIT (1/4" + 1/2" ARGON FILLED SPACE + 1/4"). VIRACON VRE1-46. FRAMING = ICR 2 1/2" x 5 1/2" DEEP SYSTEM BY OLD CASTLE, NFRC CERTIFIED, AIR INFILTRATION <06 CFM/SQFT PER ASTM E283. ALUMINUM PAINTED 2 COAT FLUOROPOLYMER. COLOR TO MATCH ARCHITECT'S SAMPLE: MEDIUM GRAY
EL-27	ALTERNATING TREAD DEVICE TO ROOF- LAPEYRE STAIR OR SIMILAR
EL-30	FENNEY DESIGN RAIL PREFINISHED ALUMINUM SYSTEM WITH VERTICAL CABLE SYSTEM, SILVER FINISH. CURBS MOUNTED SURFACE ATTACHMENT WITH #400 CAP RAIL.
EL-31	BUILDING SIGNAGE, S STL 1'-8" INDIVIDUAL LETTERS MOUNTED ON STONE WALL
EL-40	FENNEY DESIGN RAIL PREFINISHED ALUMINUM SYSTEM WITH #400 CAP RAIL
EL-47	CUSTOM GLASS CANOPY

GENERAL ELEVATION NOTES

- SEE SHEET G001 FOR DRAWING INDEX, ABBREVIATIONS AND GRAPHIC SYMBOLS
- SEE SHEET A003 FOR LOUVER TYPES
- SEE SHEETS A335 & A336 FOR WINDOW TYPE SIZES, DETAILS, ETC

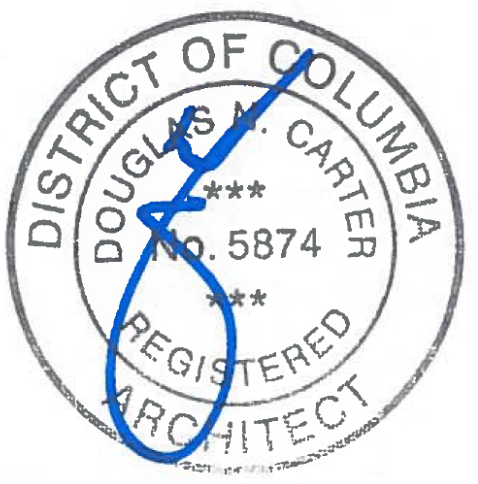
GLAZING NOTES

- ALL EXTERIOR GLAZING TO BE TEMPERED
- SEE SHEET A301 FOR EXTERIOR GLAZING SPECIFICATIONS



dcs
DESIGN

DAVIS
CARTER
SCOTT
Architects
Interior Architecture
Landscape Planning
Suite 800
8414 Westwood Center Dr.
Tysons, Virginia 22102
P 703.554.9215
F 703.821.0819
www.dcsdesign.com



PRINT DATE 8/24/2016 9:00:55 AM

ISSUE DATE
PEER REVIEW / PERMIT SET 06/29/2016

A 08/05/2016 PEER REVIEW 1
REV DATE DESCRIPTION

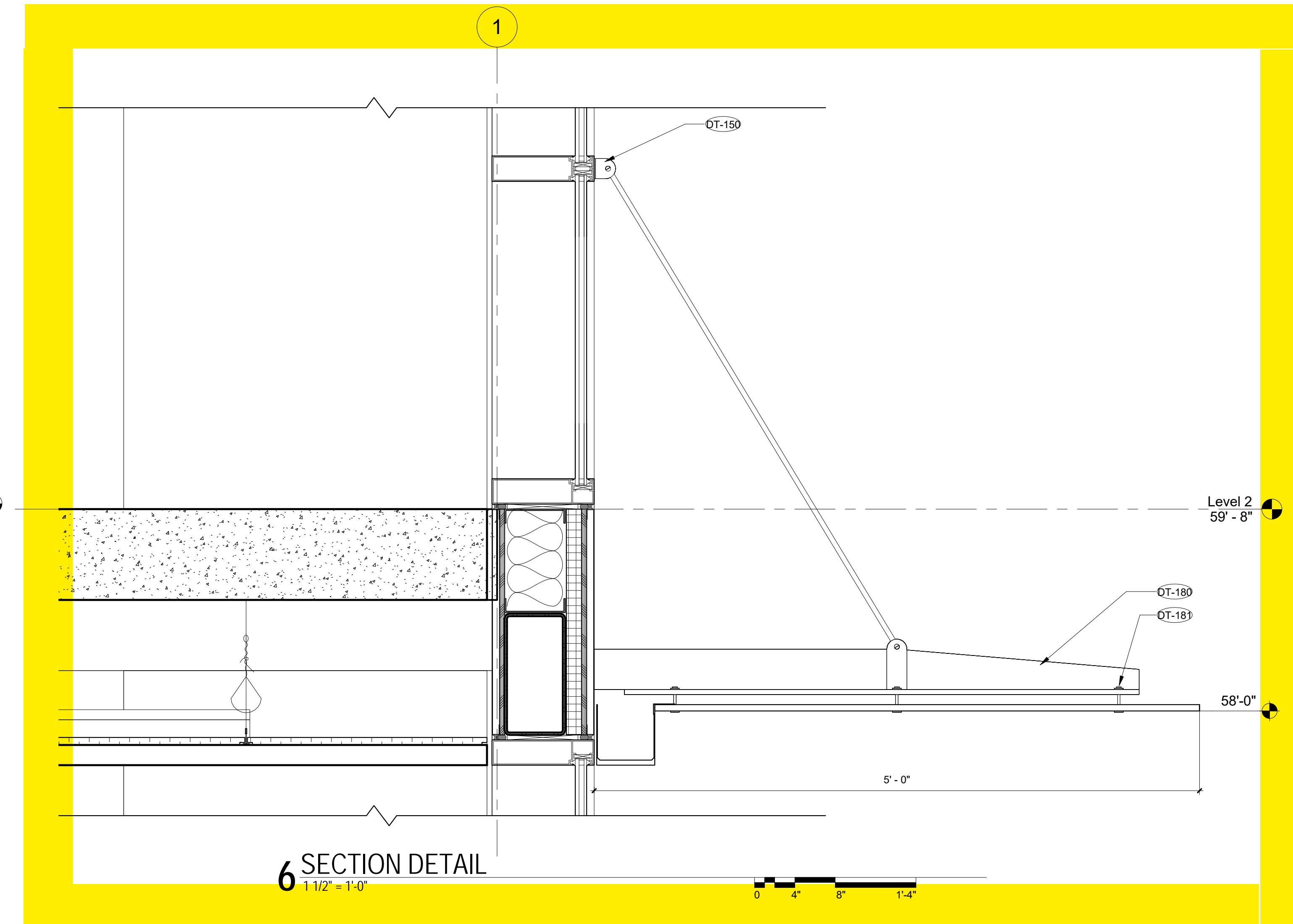
PROJECT TITLE
TYBER PLACE -
VOLUME 1

88 M St NE (NoMA),
Washington, DC 20002
PROJECT NO. 311102.23

DRAWING TITLE
EAST ELEVATION

DRAWN BY PFS, DM
CHECKED BY EU
QA REVIEWED BY

DRAWING NUMBER
A303
SHEET OF
REVIT FILE



NEW CONSTRUCTION

EXISTING CAPITAL PLAZA 1

DT-30

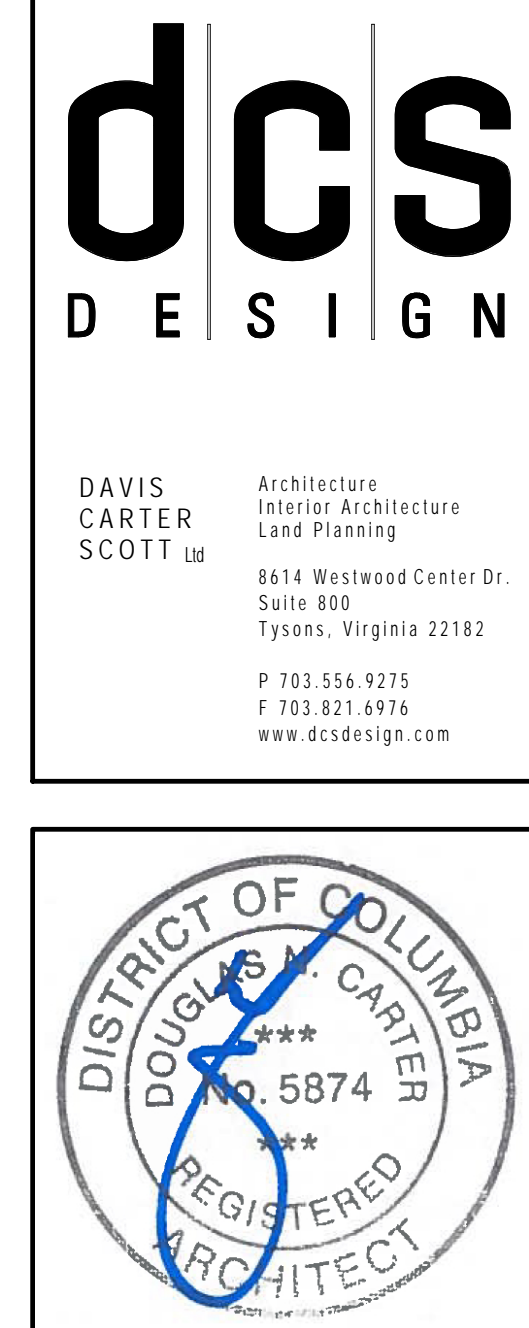
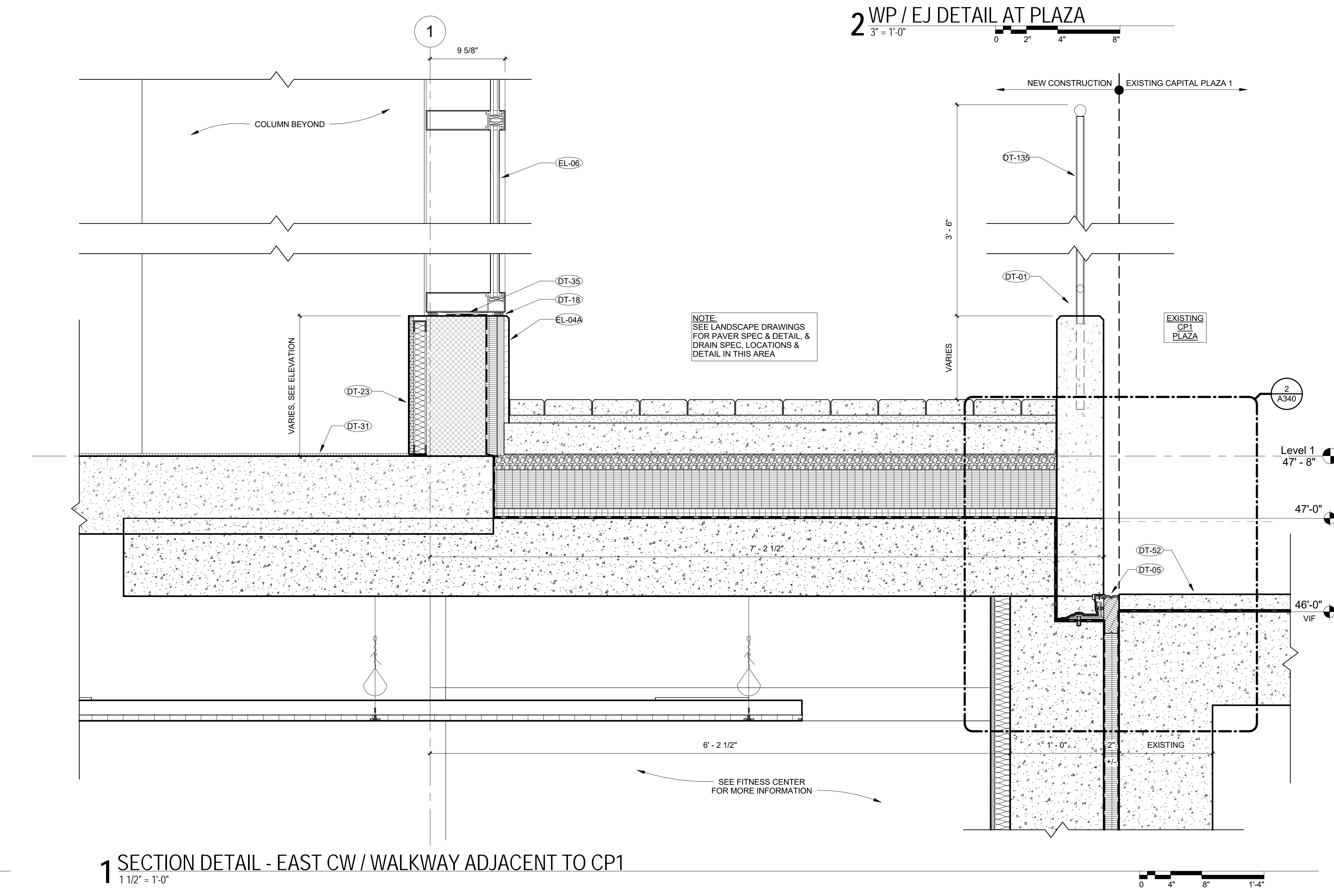
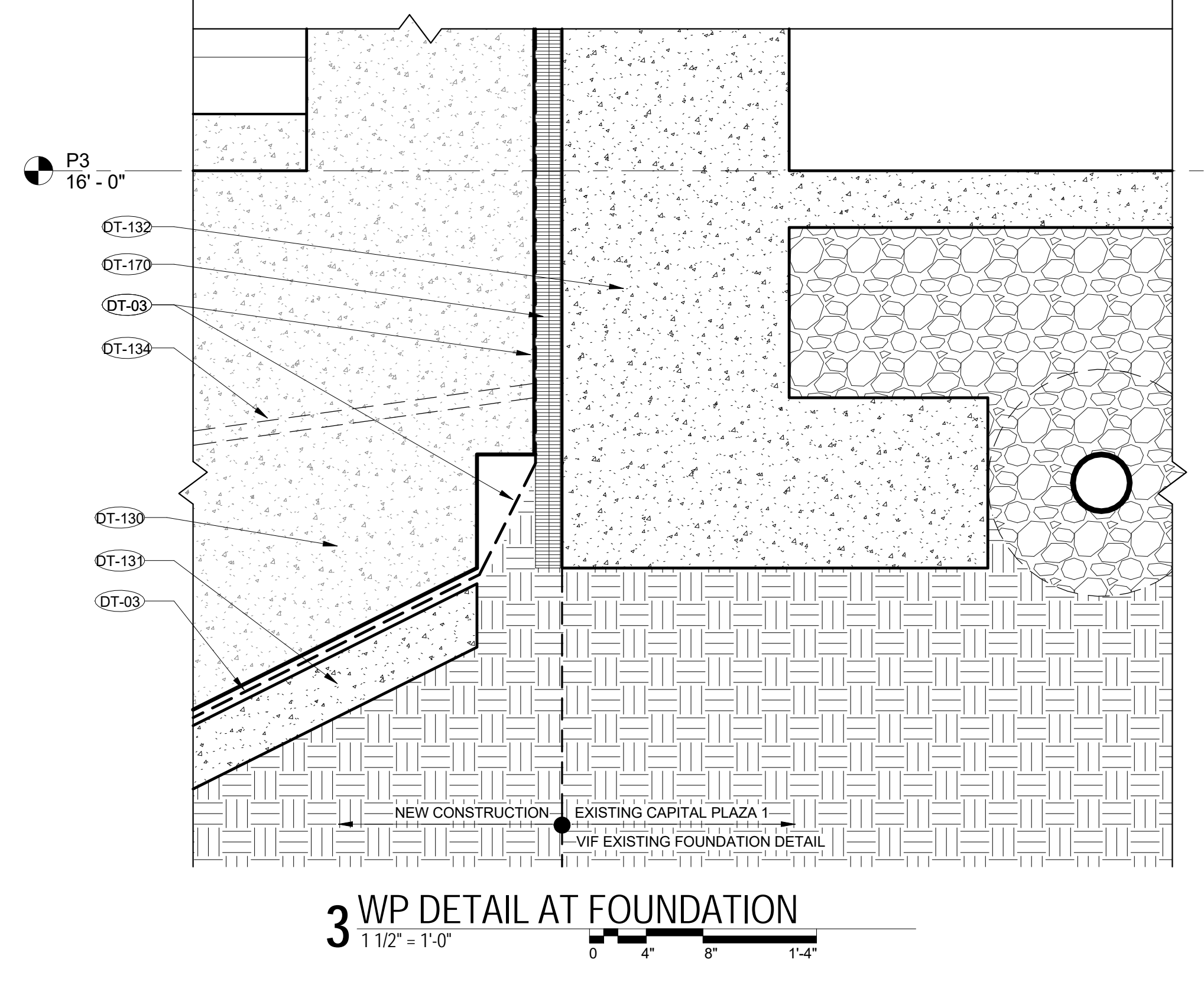
DT-03

DT-06

DT-10

DT-52

DT-53

PRINT DATE 8/23/2016 6:01:13 PM

ISSUE DATE

PEER REVIEW / PERMIT SET 09/20/2016

[illegible]

B	08/19/2016	PEER REVIEW 2
REV	DATE	DESCRIPTION

PROJECT TITLE	
TYBER PLACE - VOLUME 1	
88 M St NE (NoMA), Washington, DC 20002	
PROJECT NO.	311122.23

DRAWING TITLE

ENLARGED
DETAILS

DRAWN BY	FFS
CHECKED BY	EU
QA REVIEWED BY	

DRAWING NUMBER

A340

SHEET OF

REVIT FILE

C:\Revit\Local\A311_122_0000
COMMON\COMMON_A311_122_0000.rvt