

1401 NEW YORK AVENUE NW

HUDSON AMERICAS, LLC





CORNER OF NEW YORK AVE. & 14TH STREET



14TH STREET ENTRANCE



CLOSE UP OF 14TH STREET ENTRANCE



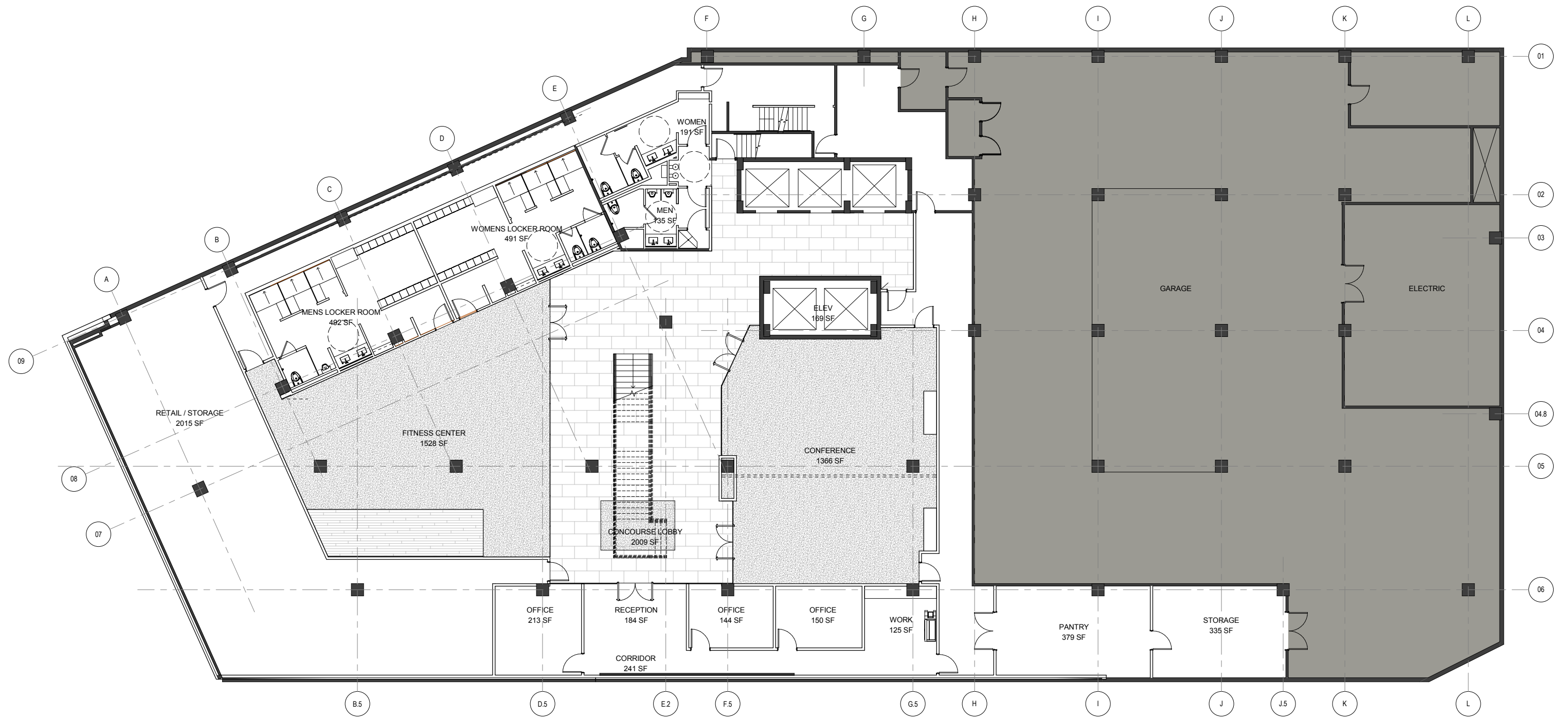
14TH STREET ARCADE



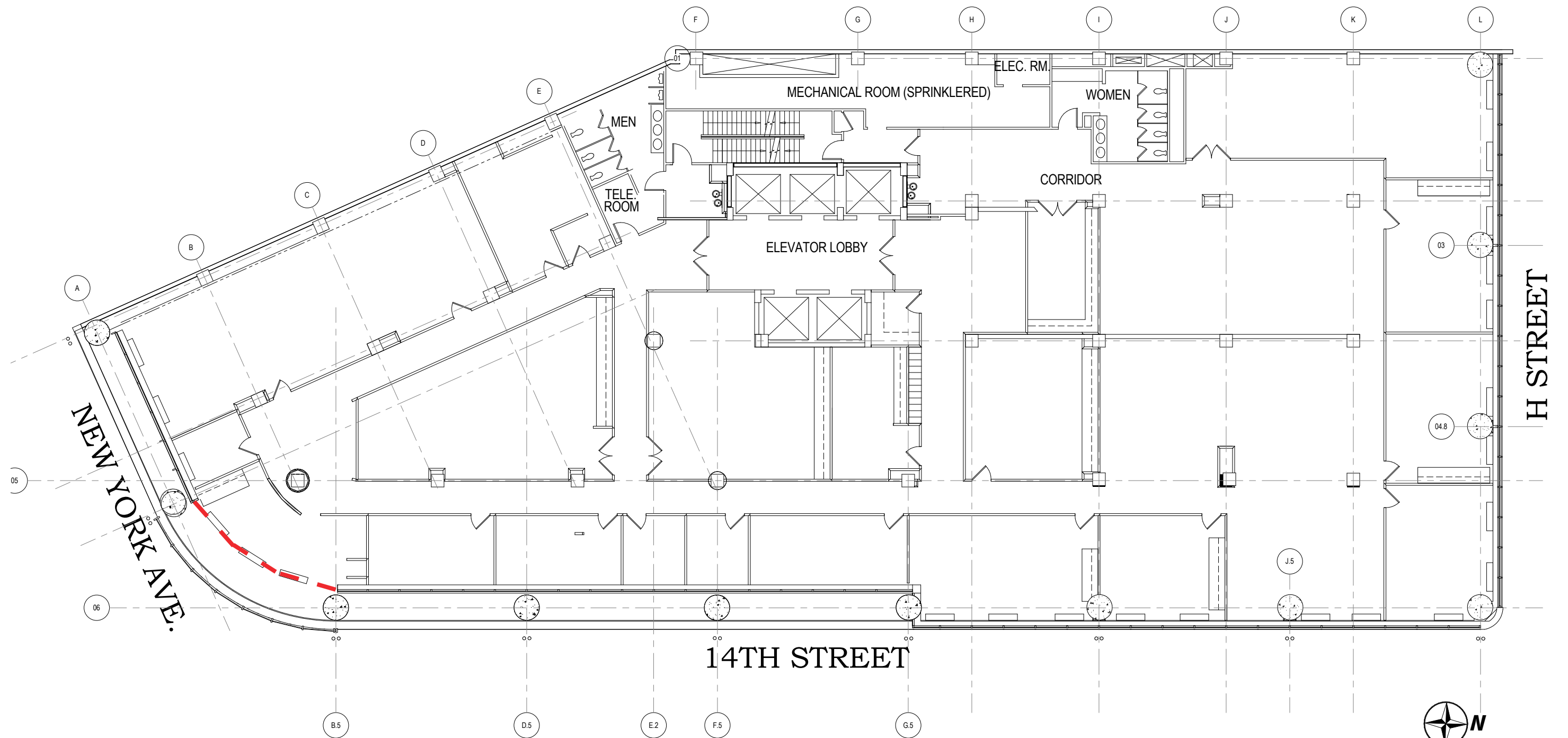
ROOF LEVEL LOOKING NORTH ON 14TH STREET



ROOF LEVEL ADJACENT TO WEST PROPERTY

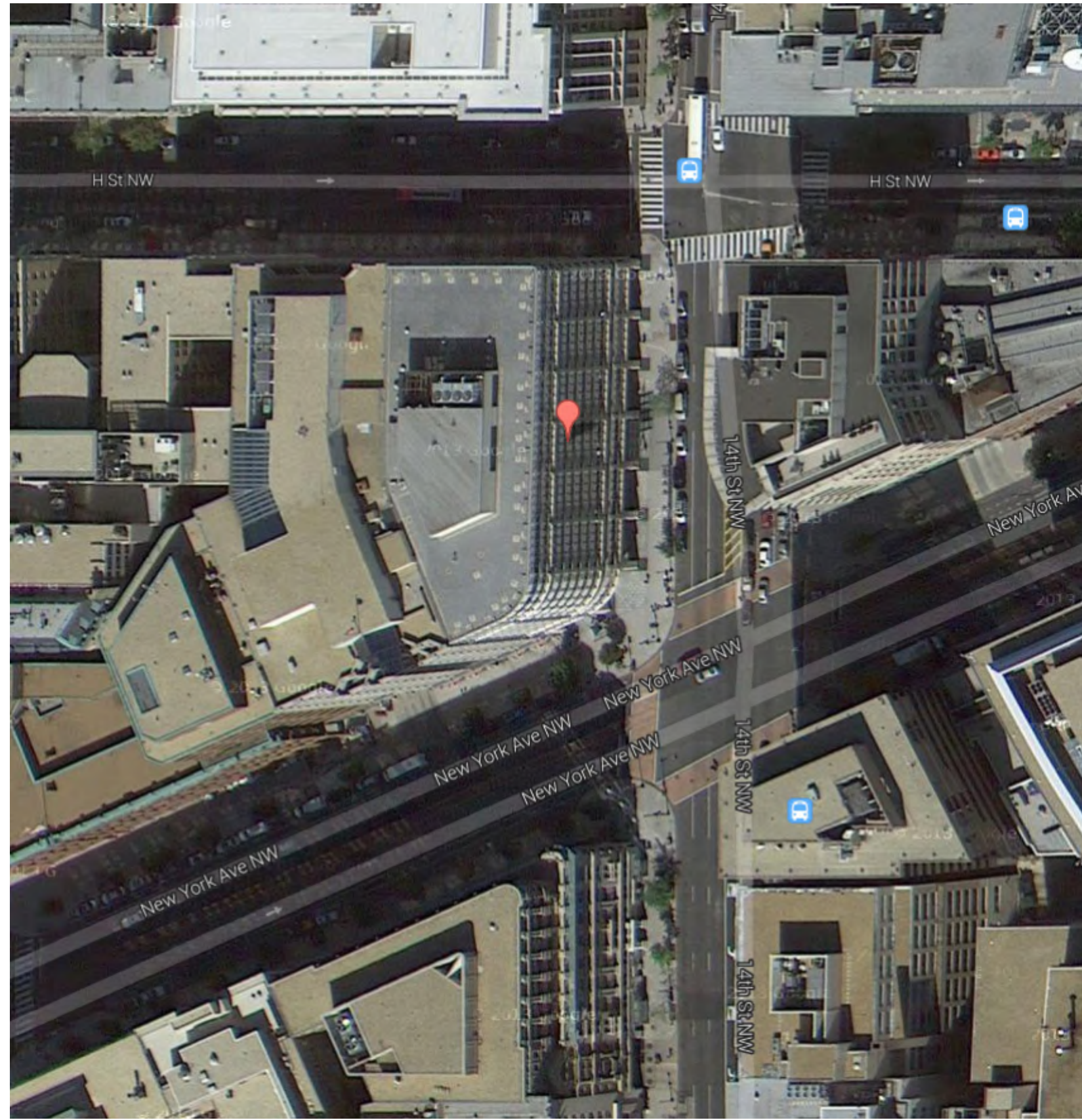


FLOOR PLAN - LEVEL BASEMENT



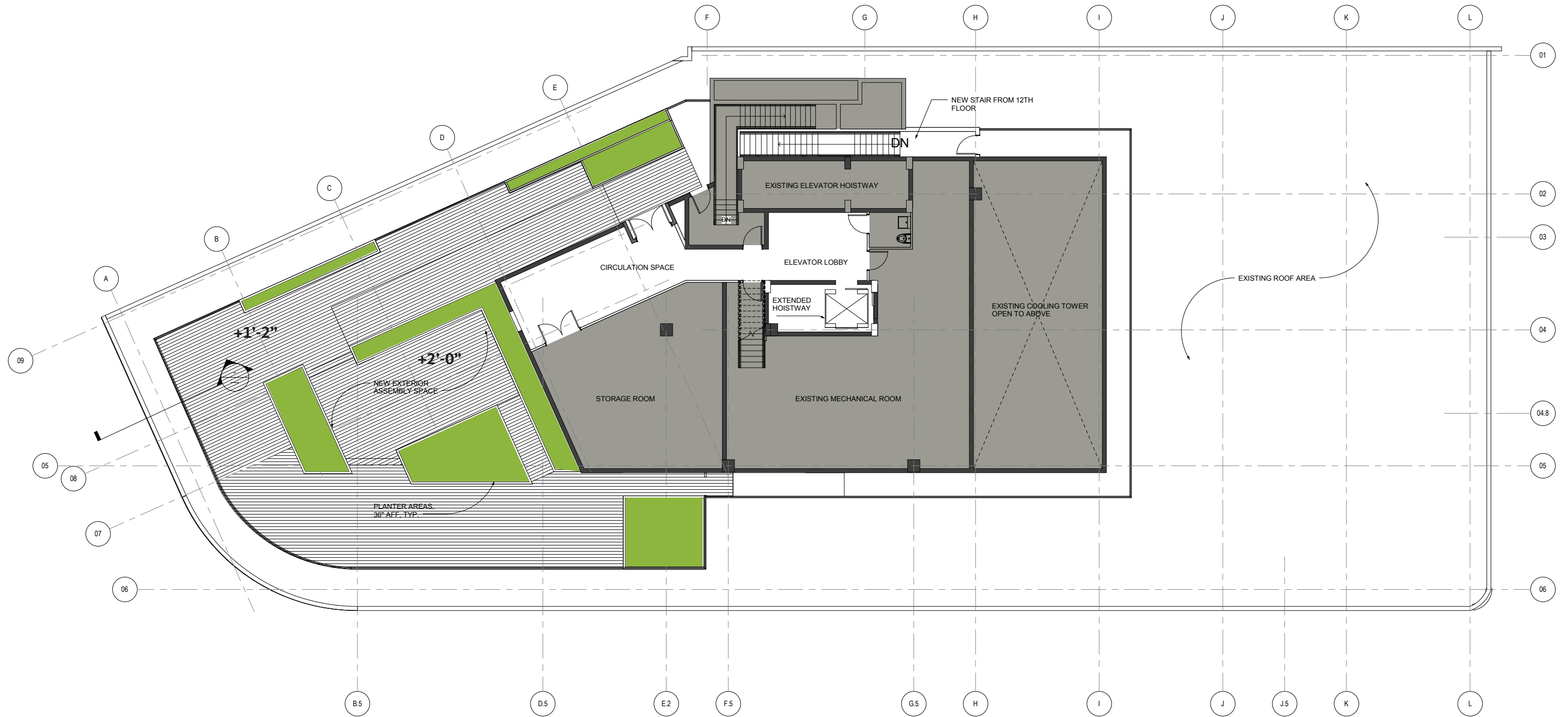
**ADDITIONAL SF TO BE RECAPTURED THROUGH
ELIMINATION OF CORNER SETBACK: 218 GSF
IF ENTIRE SETBACK WAS RECAPTURED: 856 GSF**

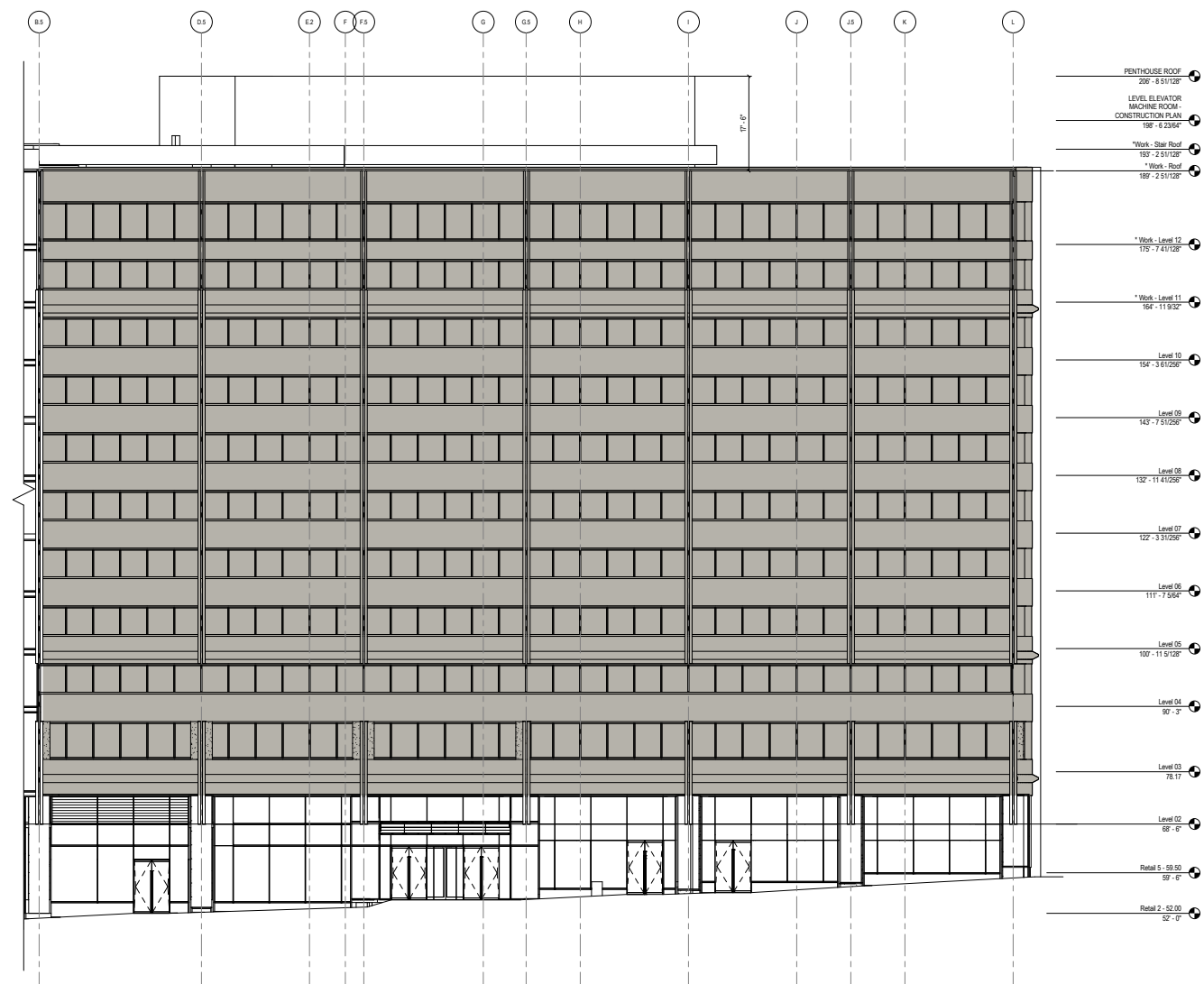




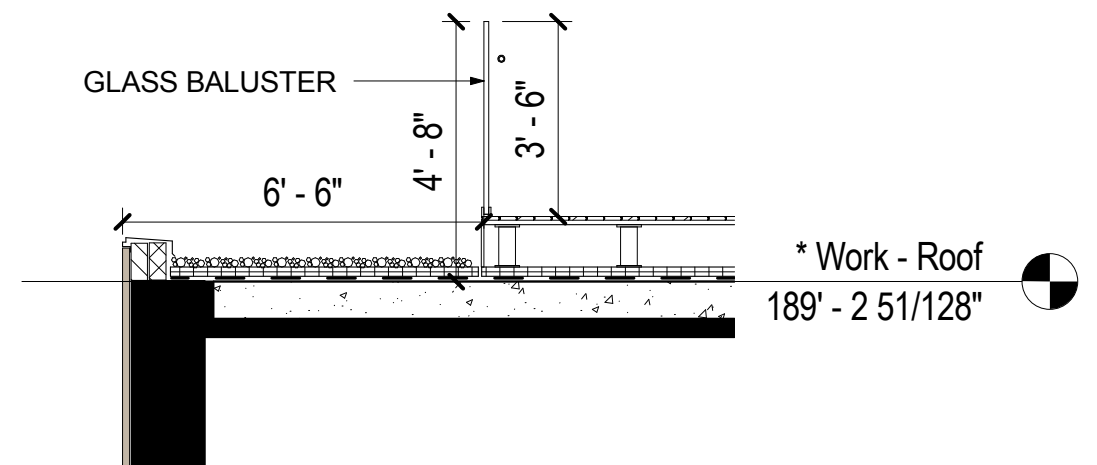


ROOF LEVEL RENDERING





14TH STREET ELEVATION



SECTION AT ROOF GUARDRAIL

H St NW

H St NW



14th St NW

New

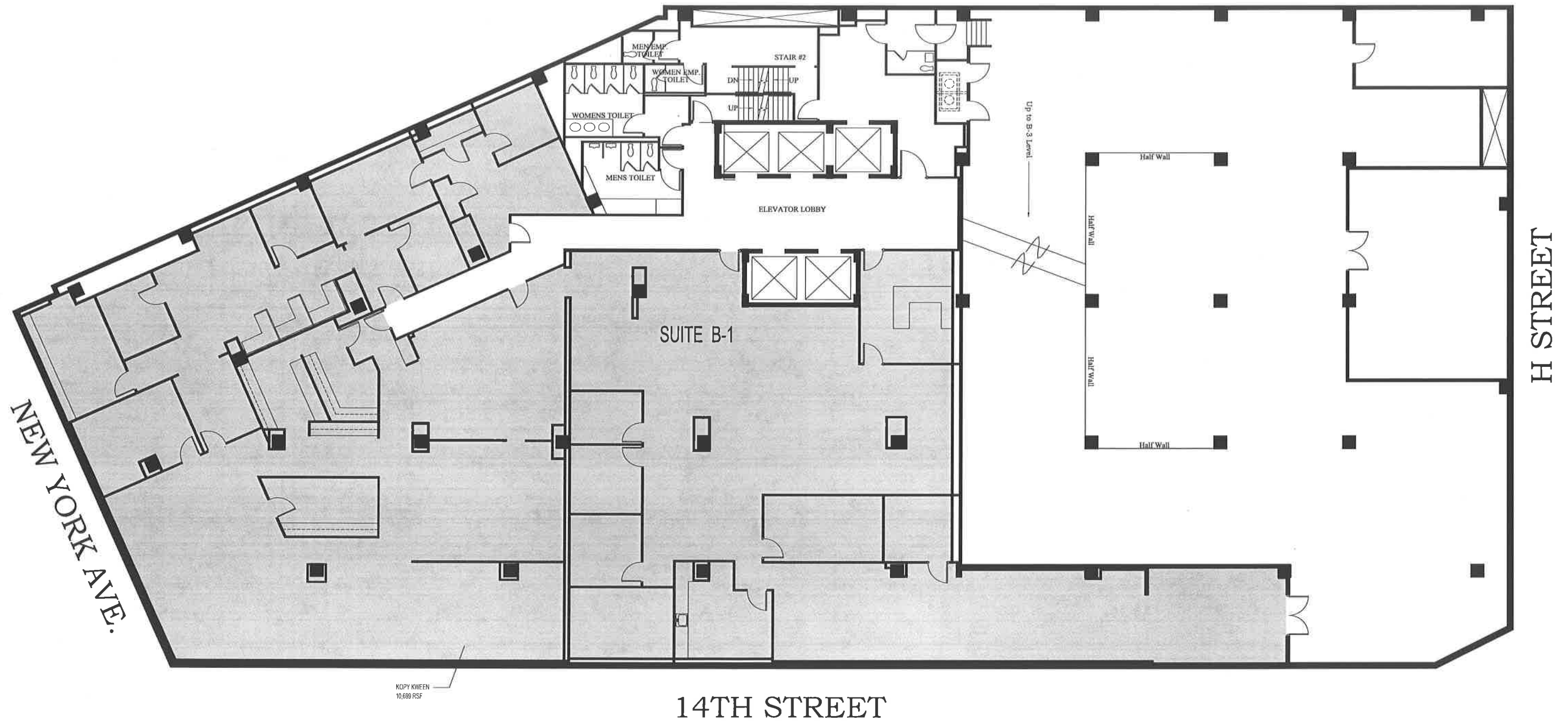
New York Ave NW

New York Ave NW

New York Ave NW

14th St NW

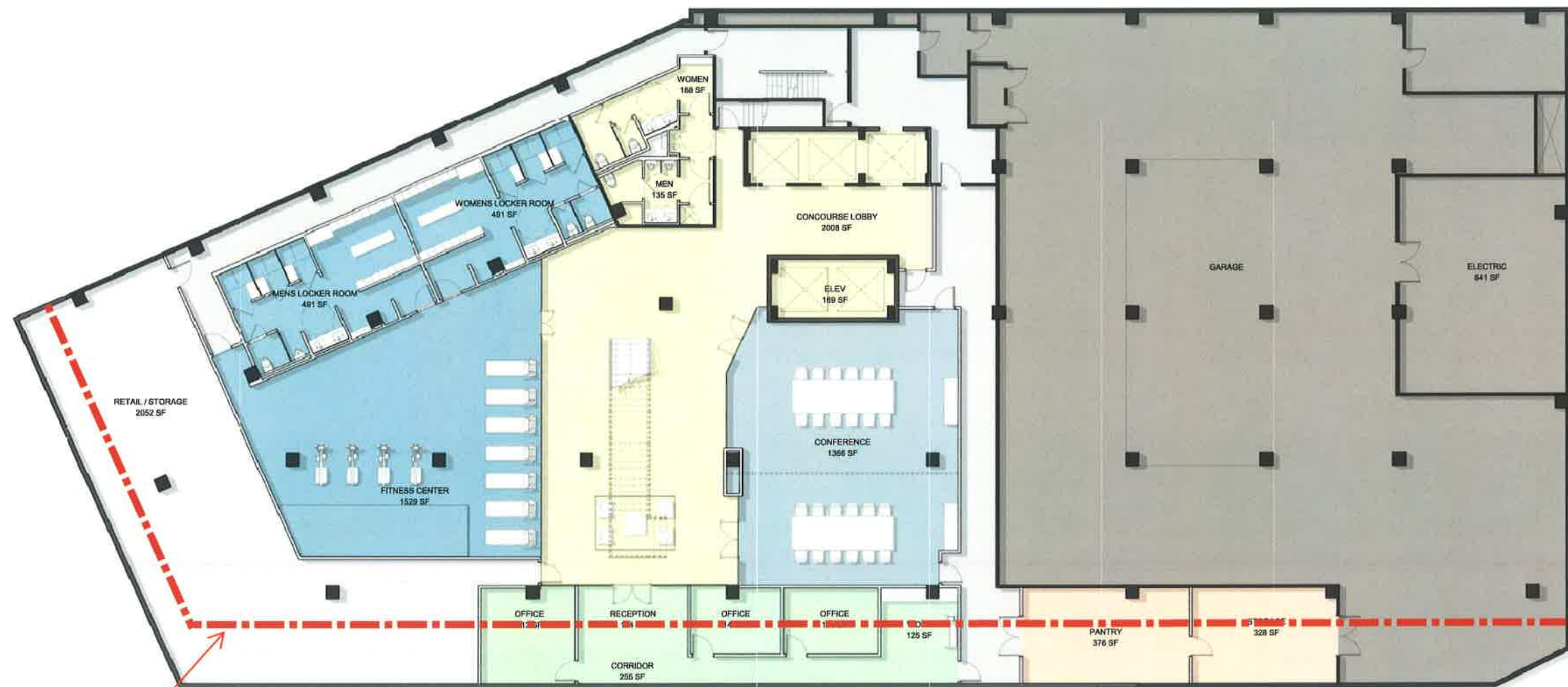




1401 New York Avenue

PARKING LEVEL B-1
10/19/11
1/16" = 1'-0"

OTJ
ARCHITECTS

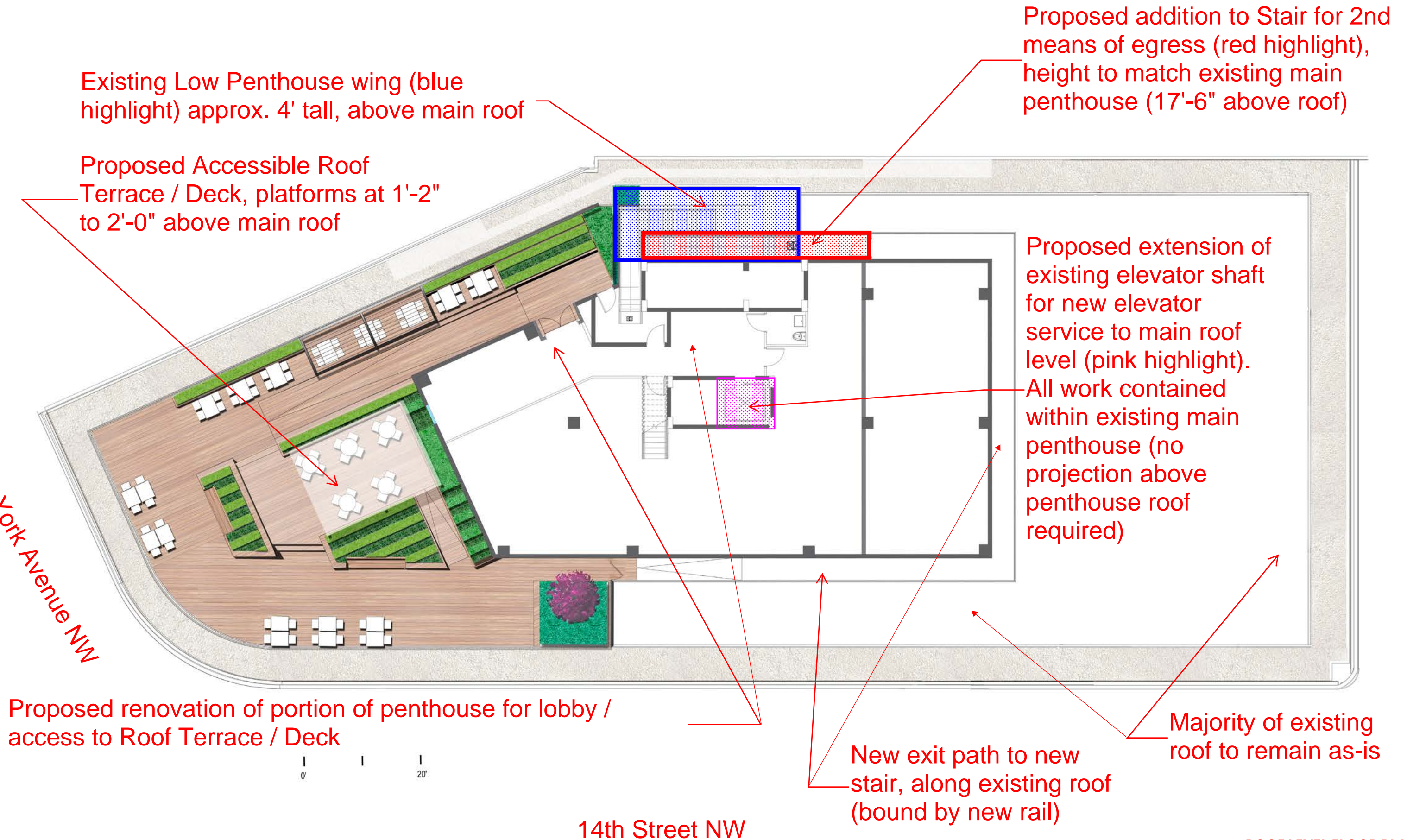


Property Line Position
(approx.) above grade

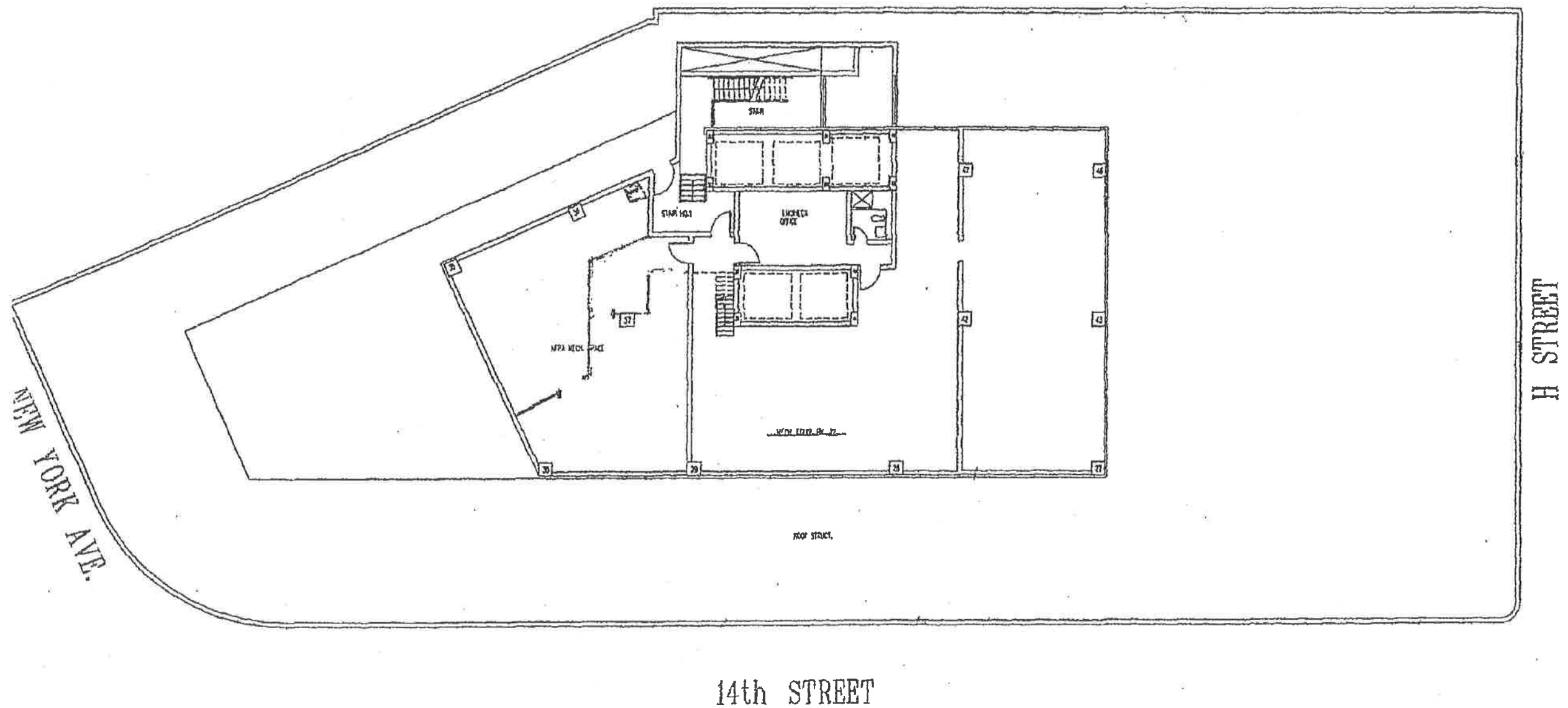


EXTERIOR CORNER PRELIMINARY RENDERING VIEW

New York Avenue NW



140 1 NEW YORK AVENUE
WASHINGTON, D.C.



LOWER PENTHOUSE