



Aerial view facing north at pool and tennis courts



OWNER



CGLA

LANDSCAPE ARCHITECT

Perspective Renderings

cox graae + spack architects

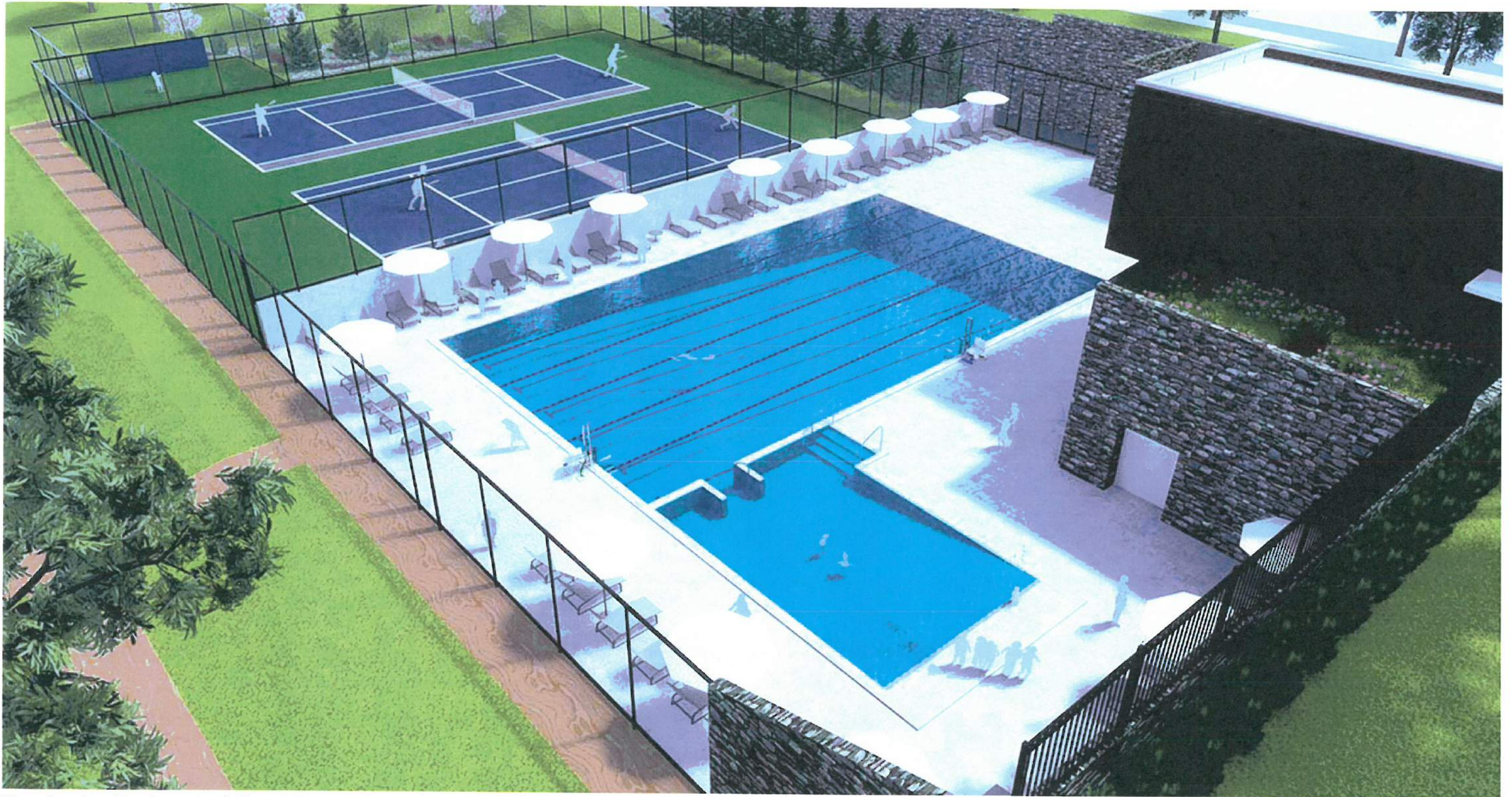


17



November 2017

copyright cox graae + spack architects 2017



View of pool and tennis courts - facing south



View from corner of 37th Street and Quebec Avenue facing northeast at proposed pool building green roof and entrance.



View facing southeast from top of stairs at 37th Street NW.



OWNER



LANDSCAPE ARCHITECT

## Park Perspectives

cox graae + spack architects

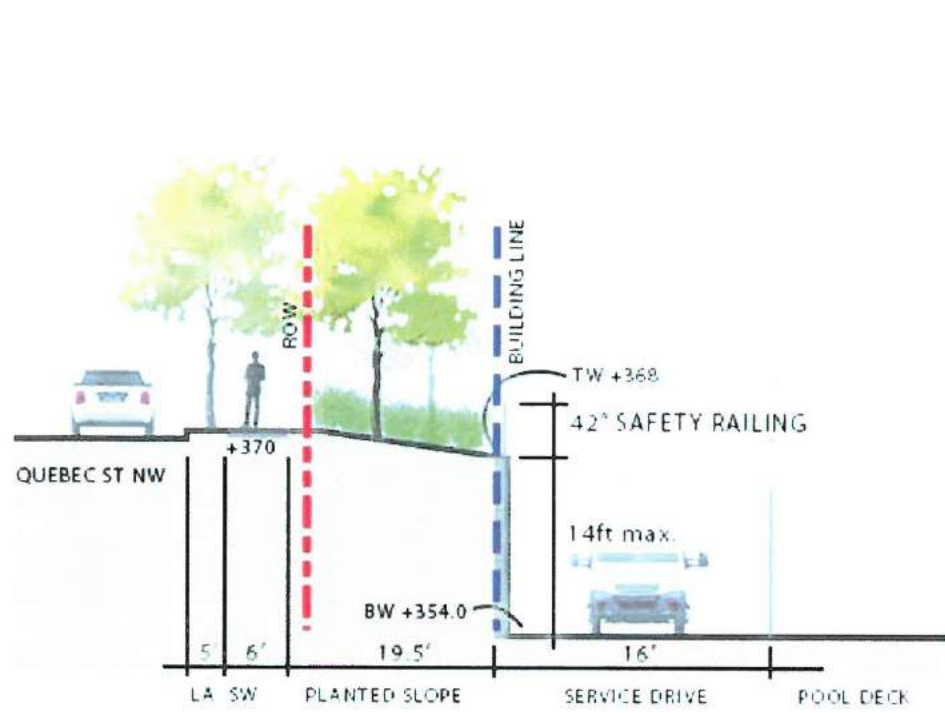


November 2017

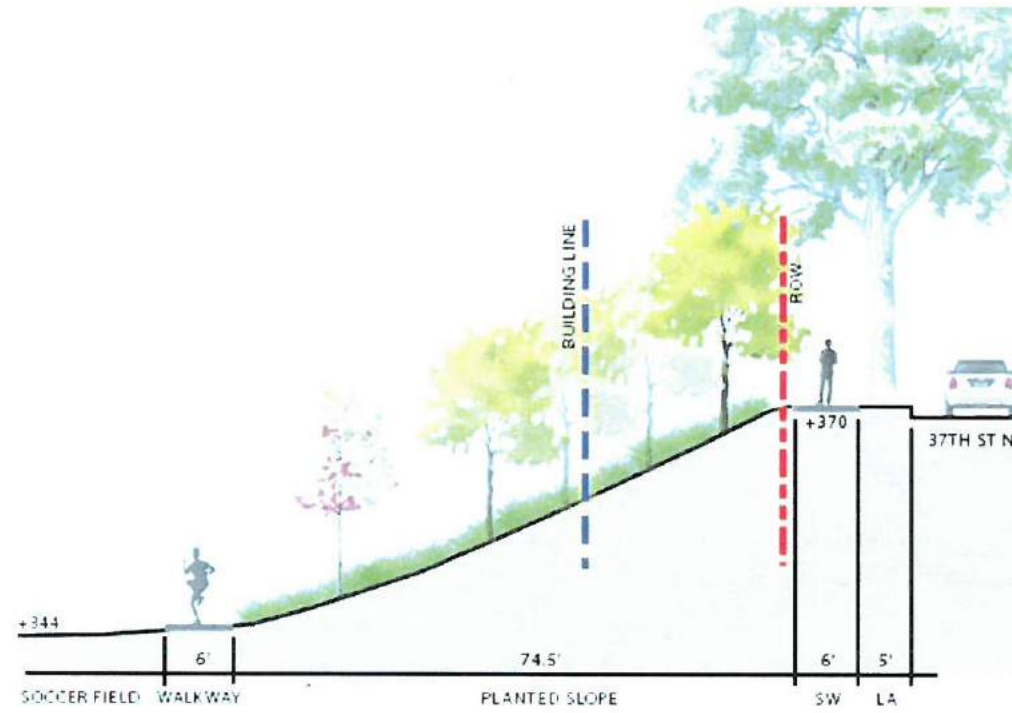
copyright cox graae + spack architects 2017



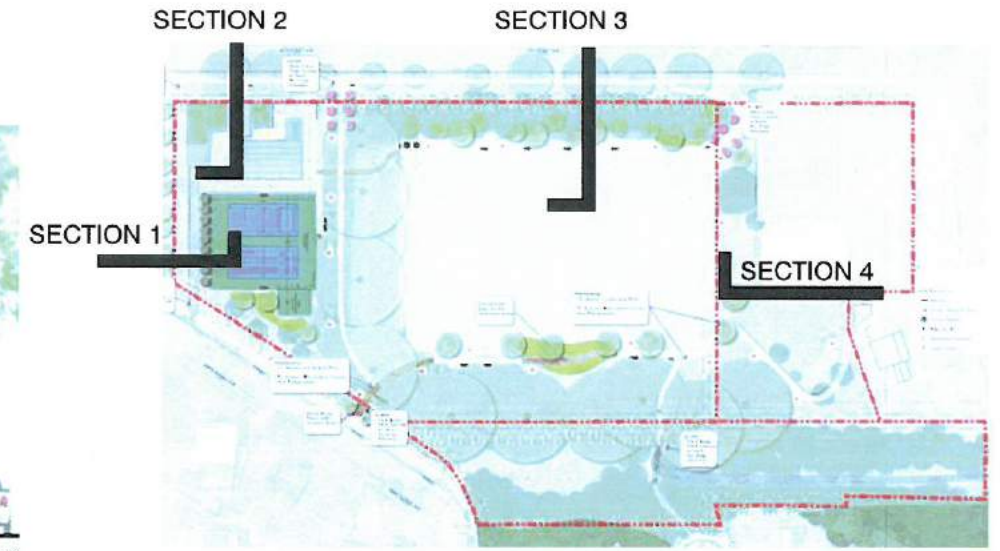
View of bio-retention area with raised path. Soccer field in background - facing north



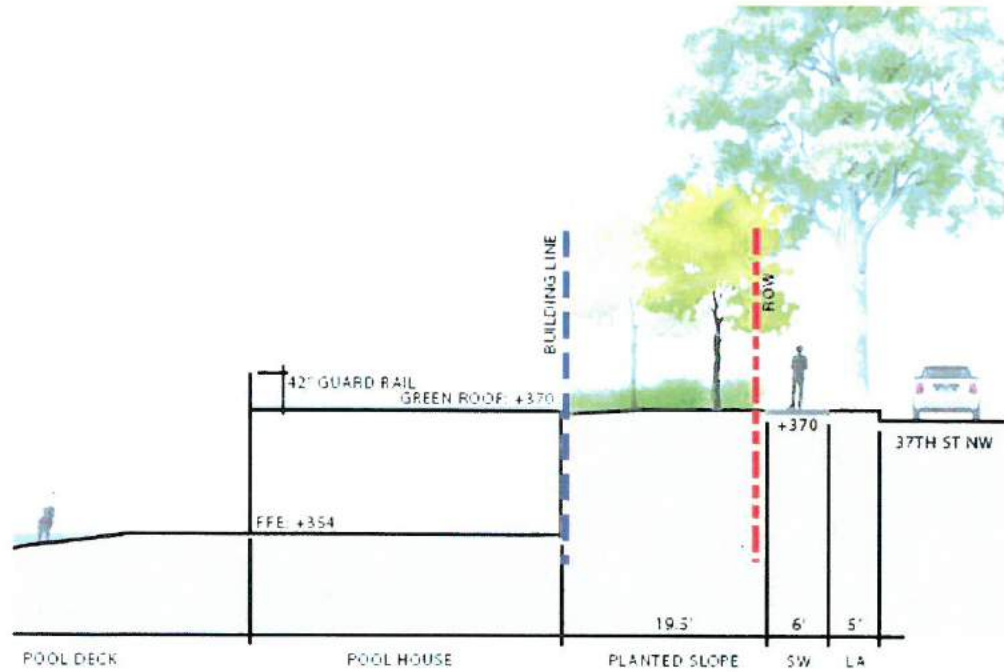
Section 1 - Quebec Road facing north (Option 1 and 2)



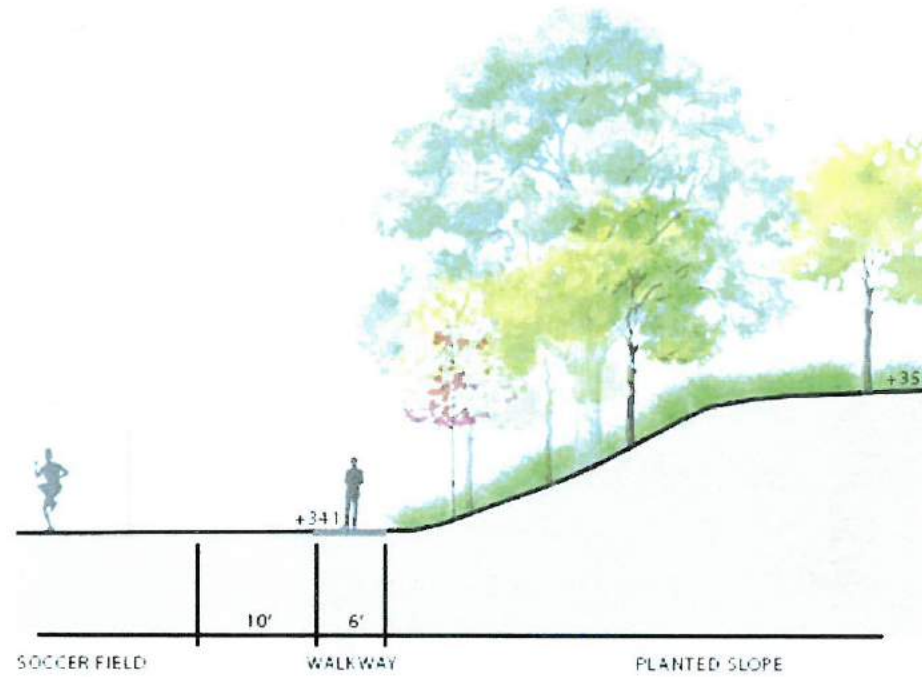
Section 3 - 37th Street at existing slope facing south (Option 1 and 2)



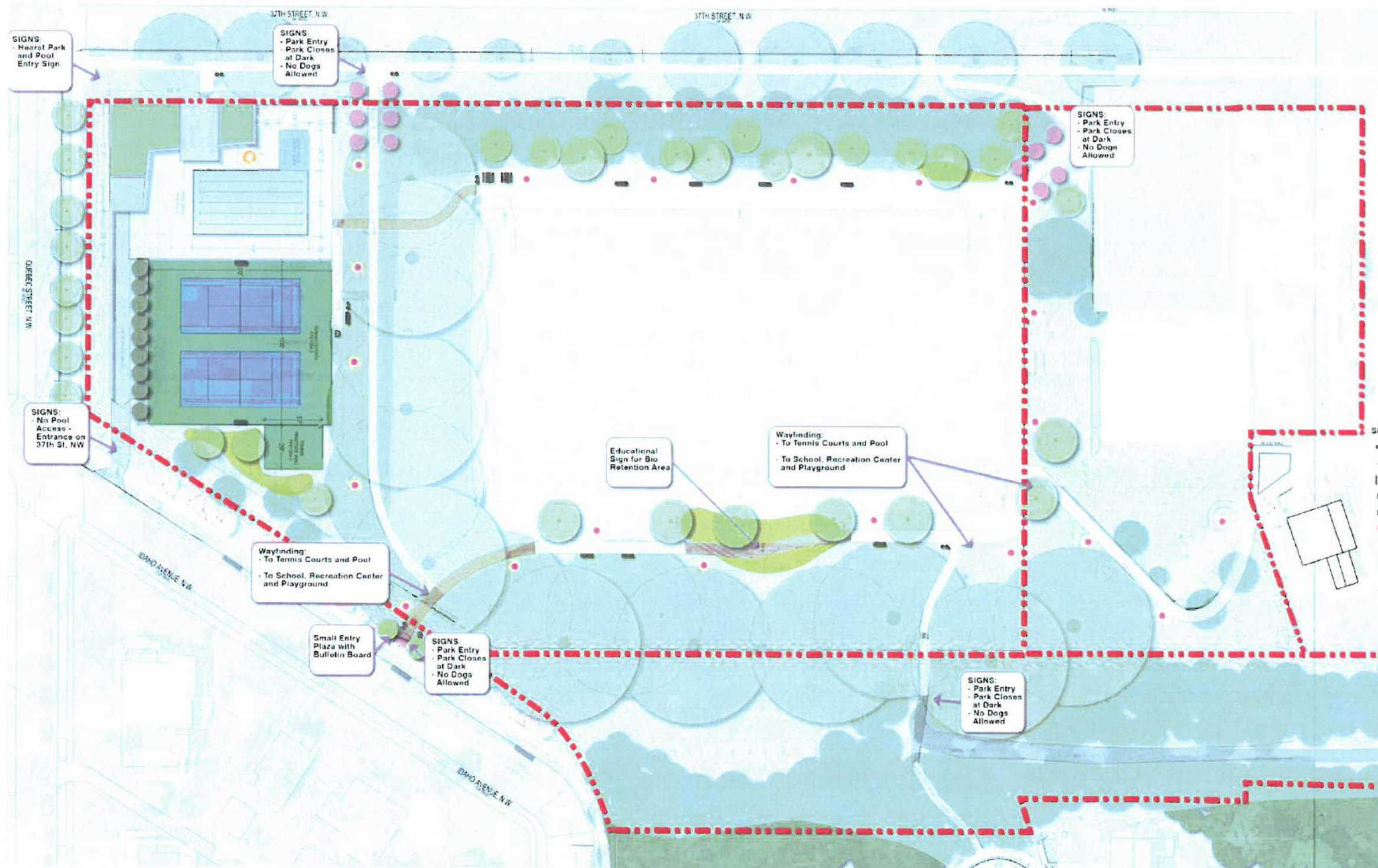
KEY PLAN



Section 2 (Opt 1) - 37th Street at pool building facing south



Section 4 - north park boundary facing west (Option 1 and 2)



PARK RULES PARK IS OPEN FROM DAWN TO DUSK	REGLAMENTO DEL PARQUE EL PARQUE ABRE DESDE EL AMANECER HASTA EL ANOJECER
<b>YES</b>	<b>Si es permitido</b>
👤 SOCIALIZING	👤 SOCIALIZAR
🐕 PETS ON LEASH	🐕 MASCOTAS CON CORREA
👁️ EXPLORING	👁️ EXPLORAR
👶 CHILDREN SHALL BE ACCOMPANIED BY AN ADULT	👶 LOS NIÑOS DEBEN ESTAR ACOMPAÑADOS DE UN ADULTO
<b>NO</b>	<b>NO es permitido</b>
🚭 SMOKING	🚭 FUMAR
🗑️ LITTERING	🗑️ TIRAR BASURA
👣 BARE FEET	👣 PIES DESCALZOS
🗑️ GLASS CONTAINERS	🗑️ ENVASES DE VIDRIO
🔊 EXCESSIVE NOISE OR LOUD MUSIC	🔊 RUIDO EXCESIVO O MUSICA FUERTE

DPR "Park Rules" Sign



DPR Park Entry Sign



Bio retention educational Sign



OWNER



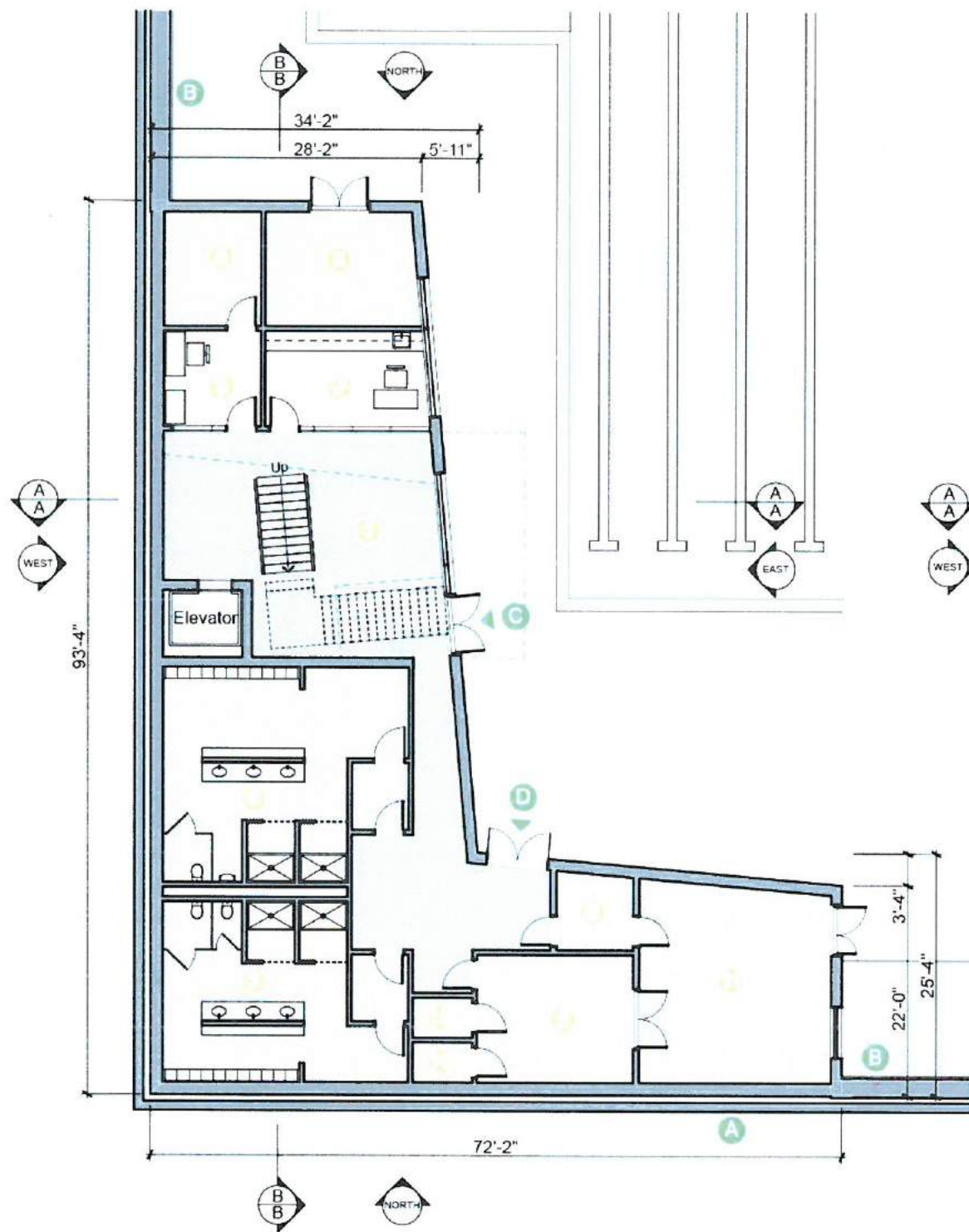
LANDSCAPE ARCHITECT

## Signage Plan

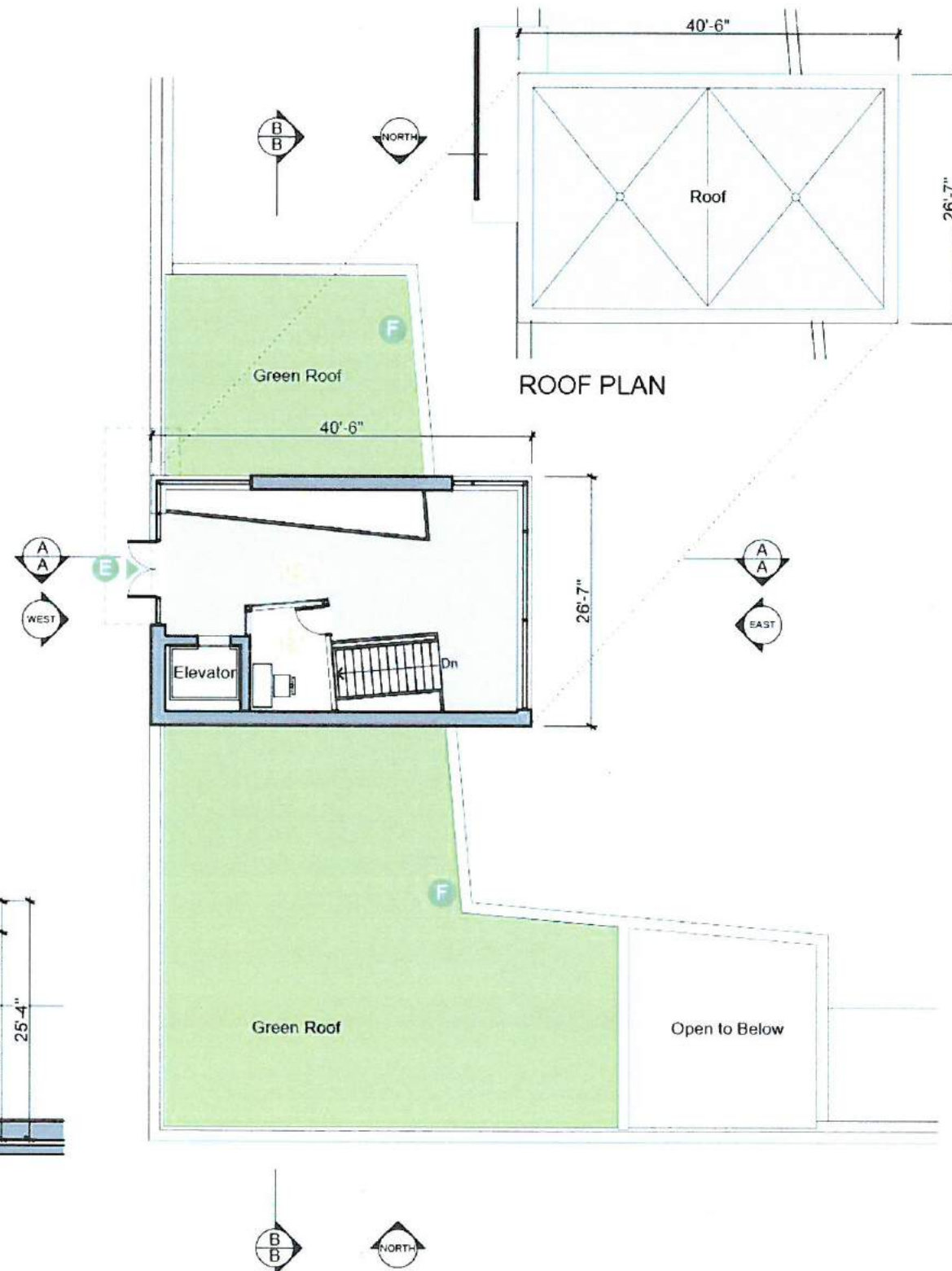
cox graae + spack architects

November 2017

copyright cox graae + spack architects 2017



FIRST FLOOR PLAN



SECOND FLOOR PLAN

**PROGRAM**

ROOMS	NET AREA
<b>FIRST FLOOR</b>	
LOBBY	635 SF
LIFEGUARD / FIRST AID	210 SF
OFFICE	120 SF
OFFICE STORAGE	90 SF
POOL DECK EQUIPMENT STORAGE	150 SF
MENS RESTROOM	440 SF
WOMENS RESTROOM	440 SF
STORAGE / TRASH ROOM	140 SF
POOL EQUIPMENT	215 SF
CHEMICAL STORAGES	50 SF
TRASH EQUIPMENT YARD	420 SF
<b>SUBTOTAL</b>	<b>2,910 SF</b>
<b>SECOND FLOOR</b>	
LOBBY	480 SF
OFFICE	85 SF
<b>SUBTOTAL</b>	<b>565 SF</b>
<b>TOTAL NET AREA</b>	<b>3,475 SF</b>

**LEGEND**

- A SHEETING AND SHORING
- B RETAINING WALL
- C DECK ENTRY
- D RESTROOM / SHOWER ENTRY
- E 37th STREET ENTRY
- F 54" PARAPET GUARD WALL



OWNER



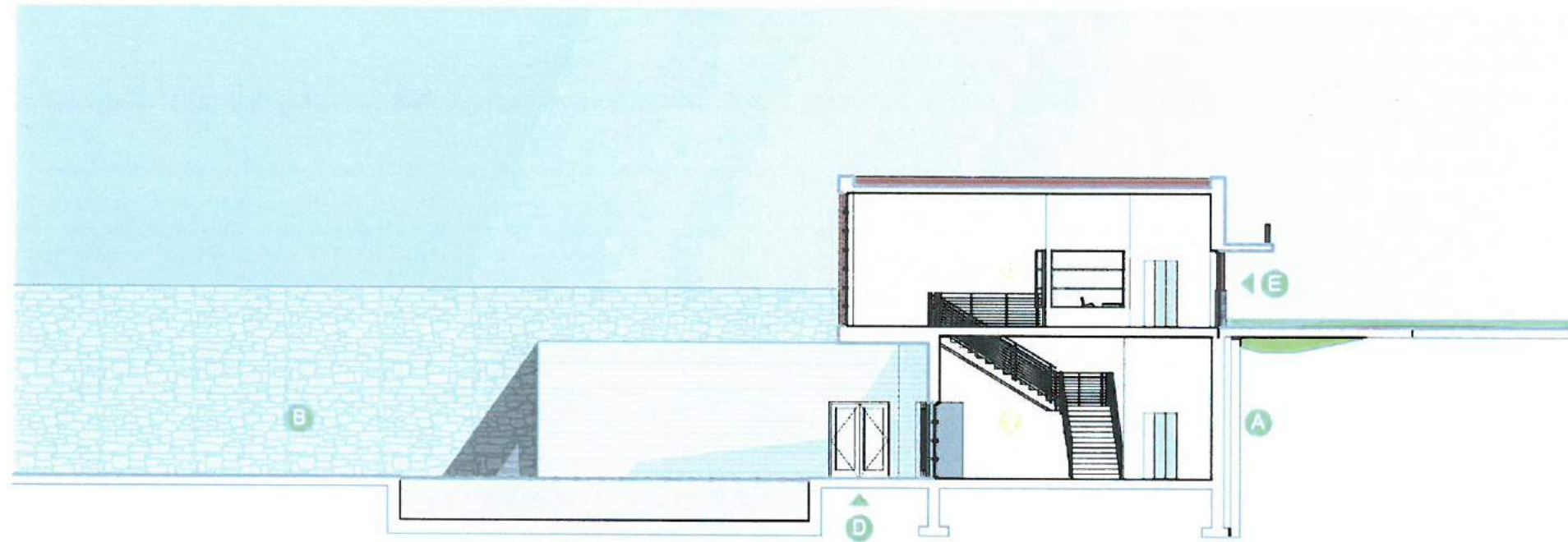
LANDSCAPE ARCHITECT

**Building Floor Plans**

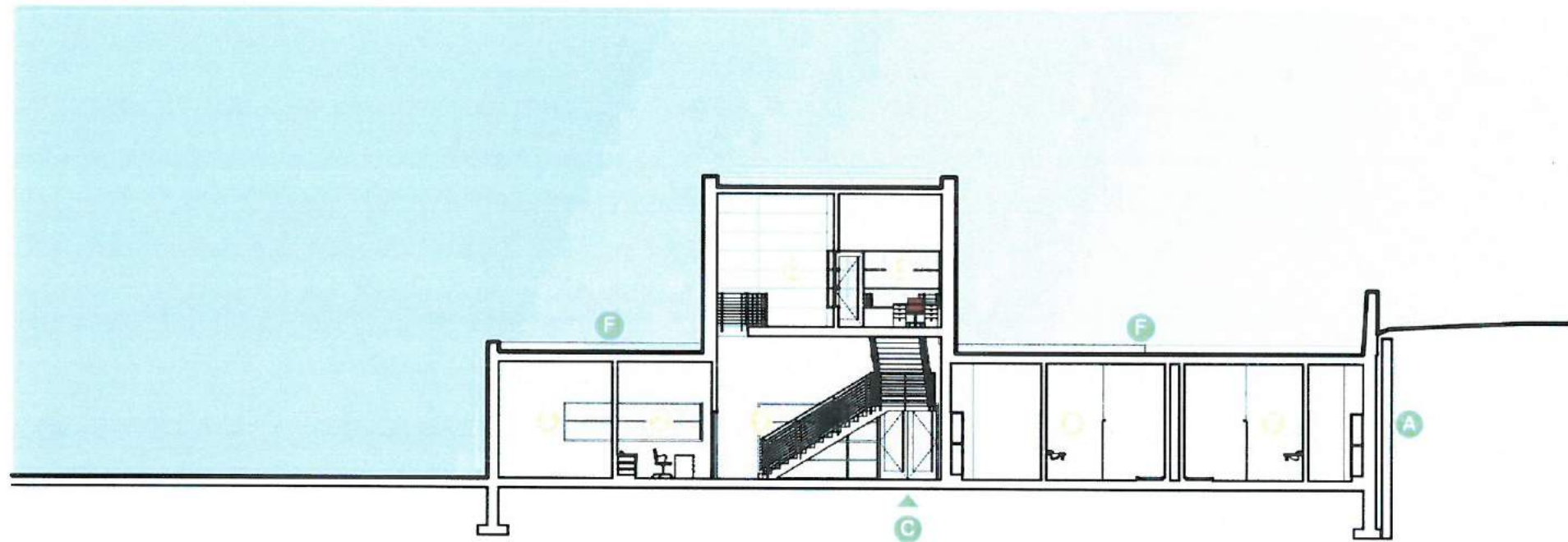
**cox graae + spack architects**

November 2017  
copyright cox graae + spack architects 2017





BUILDING SECTION A-A



BUILDING SECTION B-B

**PROGRAM**

**FIRST FLOOR**

- LOBBY
- LIFEGUARD / FIRST AID
- OFFICE
- OFFICE STORAGE
- POOL DECK EQUIPMENT STORAGE
- MENS RESTROOM
- WOMENS RESTROOM
- STORAGE / TRASH ROOM
- POOL EQUIPMENT
- CHEMICAL STORAGE
- TRASH EQUIPMENT YARD

**SECOND FLOOR**

- LOBBY
- OFFICE

**LEGEND**

- A SHEETING AND SHORING
- B RETAINING WALL
- C DECK ENTRY
- D RESTROOM / SHOWER ENTRY
- E 37th STREET ENTRY
- F 54" PARAPET GUARD WALL



OWNER



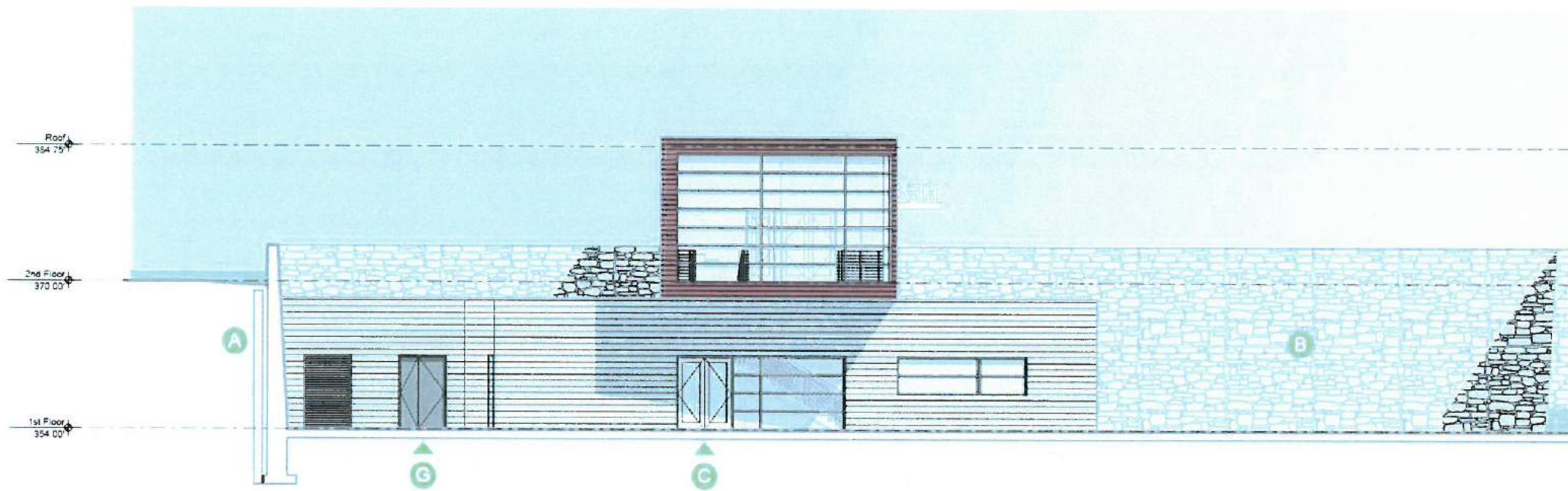
**Building Sections**

**cox graae + spack architects**

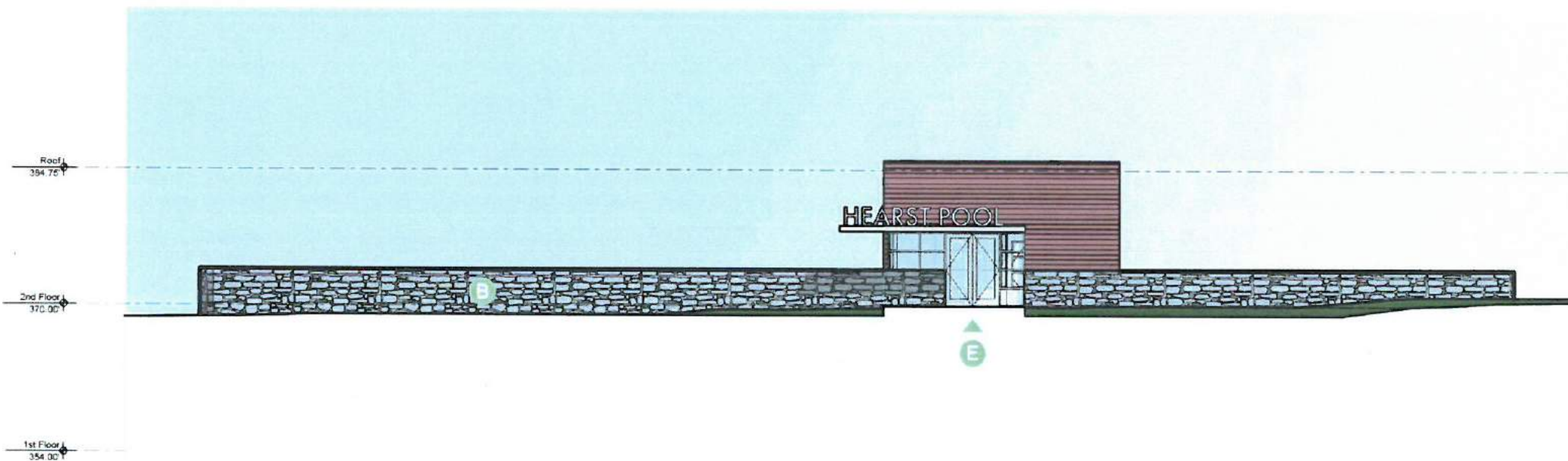
November 2017

copyright cox graae + spack architects 2017





EAST ELEVATION



WEST ELEVATION

LEGEND

- A SHEETING AND SHORING
- B RETAINING WALL
- C DECK ENTRY
- D RESTROOM / SHOWER ENTRY
- E 37th STREET ENTRY
- F 54" PARAPET GUARD WALL
- G TRASH / STORAGE ROOM ENTRY



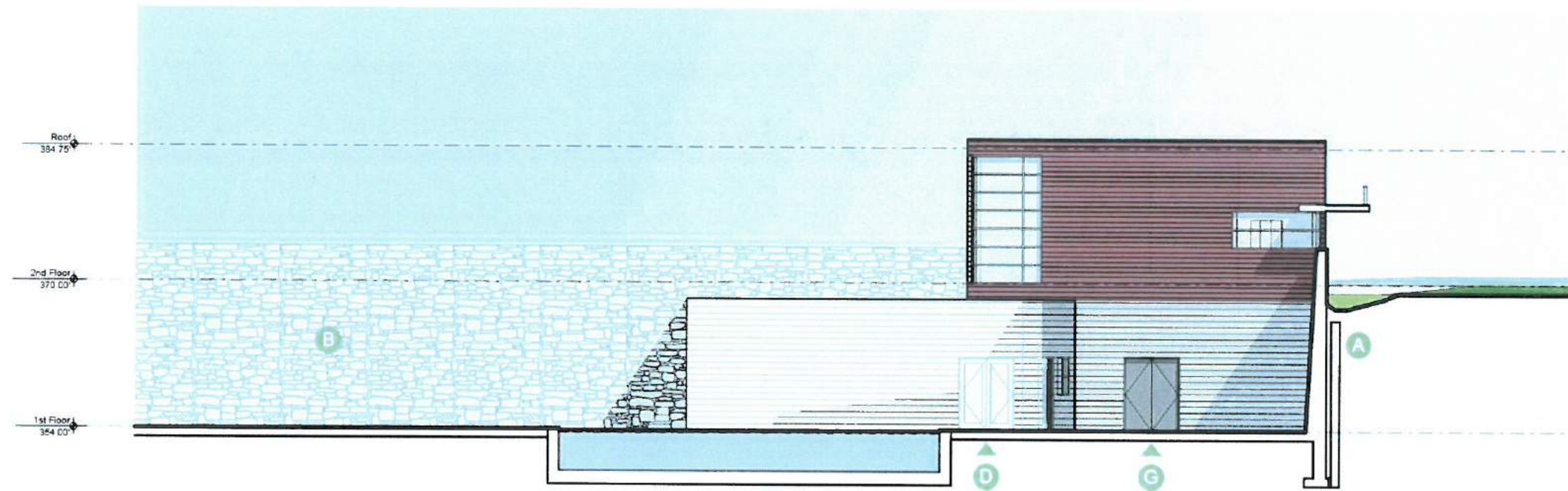
OWNER



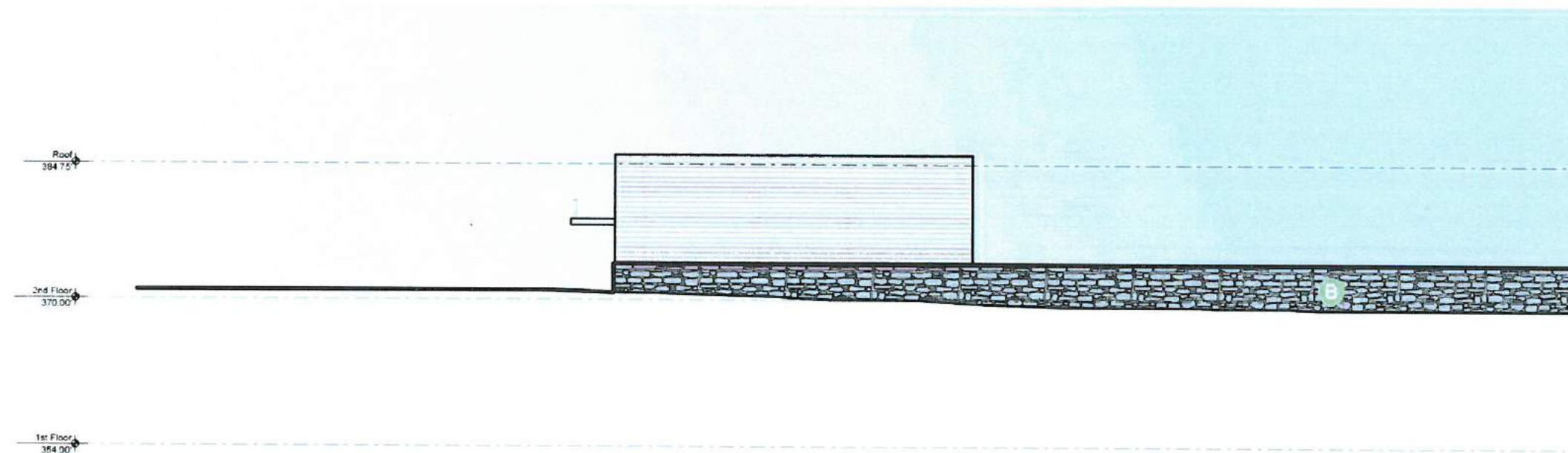
Building Elevations

cox graae + spack architects 

November 2017  
copyright cox graae + spack architects 2017



EAST ELEVATION



WEST ELEVATION

LEGEND

- A SHEETING AND SHORING
- B RETAINING WALL
- C DECK ENTRY
- D RESTROOM / SHOWER ENTRY
- E 37th STREET ENTRY
- F 54" PARAPET GUARD WALL
- G TRASH / STORAGE ROOM ENTRY



OWNER



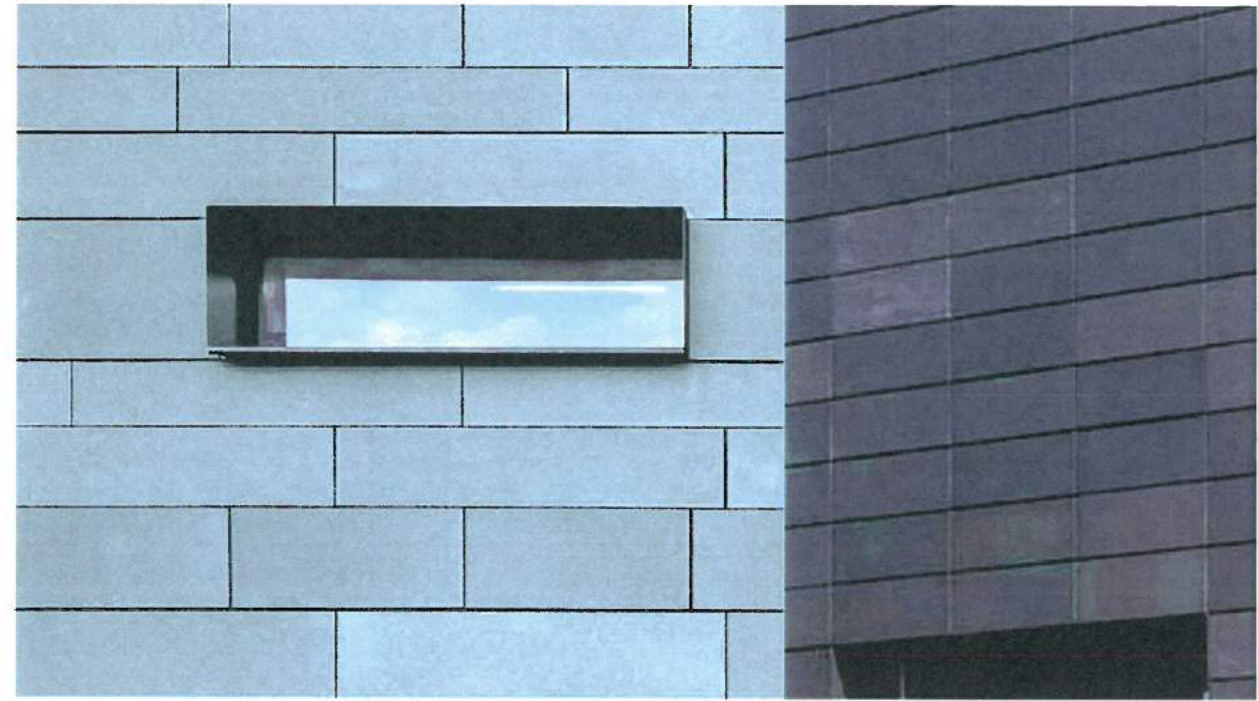
Building Elevations

cox graae + spack architects

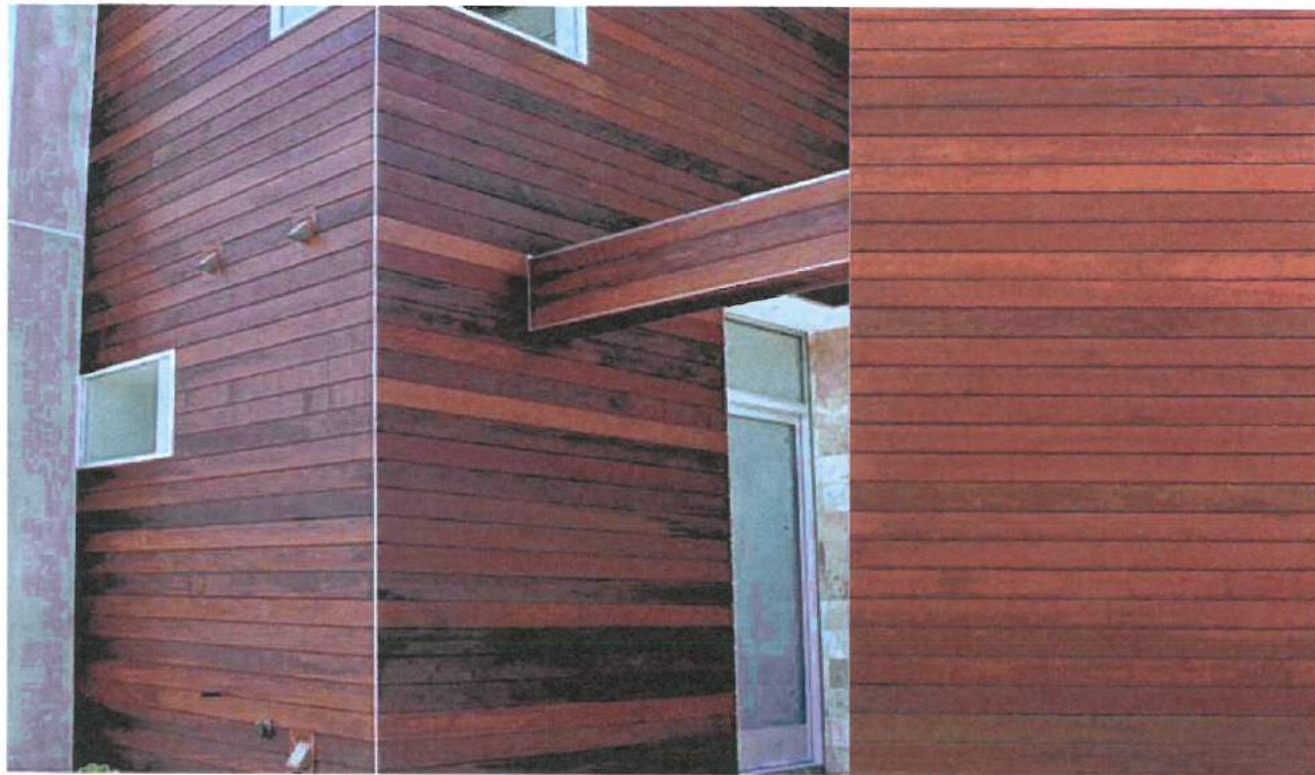
November 2017  
copyright cox graae + spack architects 2017



Rubble Stone Retaining Wall



Metal Panel Cladding



Wood Siding



Aluminum Window System

Sun Shade



Vertical Profiled Metal Panel



Ground Faced Concrete Masonry Units



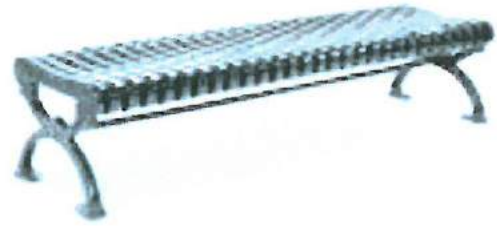
Horizontal Profiled Metal Panel



Board Formed Concrete



Terra Cotta Wall Panels



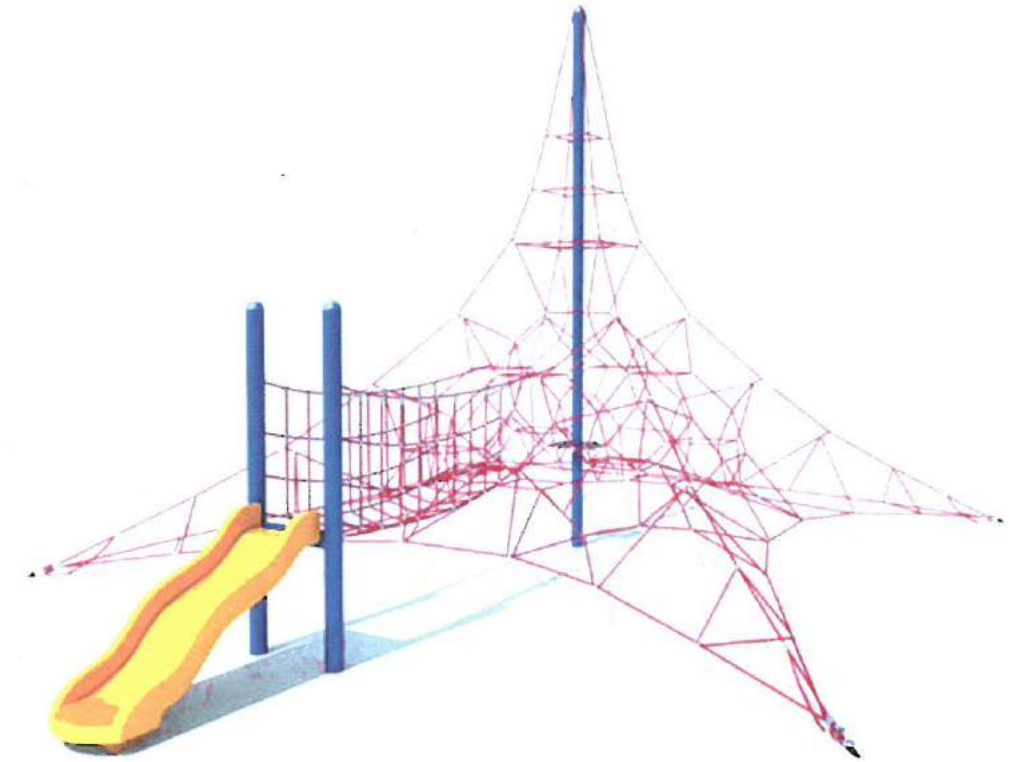
DPR standard ribbon backless bench for tennis courts by Dumor, Inc.



Concrete Walkway



Raised wood or metal path adjacent to heritage trees



Canvas shade sails over selected play areas



DPR standard 21 in. metal grill by Dumor, Inc.



DPR standard inverted "U" bike rack



DPR standard ribbon metal 48 in. square picnic table by Dumor, Inc.



DPR standard ribbon metal bench by Dumor, Inc.



DPR standard ribbon metal litter and recycle bins by Dumor, Inc.



DPR standard Drinking Fountain by Elkay, Inc.



Canvas shade sails over selected play equipment



*Fagus grandiflora*  
 American Beech  
 Height: 50'  
 Bloom: April-May | Yellow-Green  
 Fall Interest



*Betula nigra* 'Heritage'  
 River Birch  
 Height: 80'  
 Bloom: April-May | Brown  
 Fall Interest



*Carpinus caroliniana* 'Palisade'  
 American Hornbeam  
 Height: 30'  
 Bloom: February | White-Green  
 Fall Interest



*Prunus serrulata* 'Kwanzan'  
 Kwanzan Cherry Tree  
 Height: 25'  
 Bloom: April | Pink  
 Fall Interest



*Gleditsia triacanthos*  
 Honeylocust Tree  
 Height: 70'  
 Bloom: April-May | Yellow-Green  
 Fall Interest



*Amelanchier arborea*  
 Common Serviceberry  
 Height: 36'  
 Bloom: April-May | White-Green  
 Spring Interest



OWNER



LANDSCAPE ARCHITECT

**Plant Materials - Trees**



Carex pensylvanica  
Pennsylvania Sedge  
Height: 6-18"  
Fall Interest



Chasmanthium latifolium  
Sea Oats  
Height: 2-5'  
Bloom: July-September | Tan



Eupatorium hyssopifolium  
Hyssop-leaved Thoroughwort  
Height: 1-4'  
Bloom: July-October | White



Schizachyrium scoparium Little  
Bluestem  
Height: 1-4'  
Bloom: July-October | White



Pennisetum alopecuroides 'Hameln'  
Fountain Grass  
Height: 1.5-2.5'  
Bloom: August-October | white

## FERNS



Dryopteris cristata  
Crested Wood Fern  
Height: 18-30" bioretention | Evergreen

## GROUNDCOVER / VINES



Asarum canadense  
Wild Ginger  
Height: 6"  
Semi-evergreen





Viburnum dentatum  
Arrowwood Viburnum  
Height: 10'  
Bloom: May-June | White



Rhododendron  
Azalea  
Height: 4-5'  
Bloom: April-June | Red, White, Pink,  
Lavender



Euonymus fortunei 'Emerald 'n' Gold'  
Wintercreeper Euonymus  
Height: 1.5-2'  
Bloom: June | Greenish white or yellow  
Fall Interest



Spiraea japonica  
Japanese Meadowsweet  
Height: 4-6'  
Bloom: June-July | Pink



Rudbeckia hirta  
Black-eyed Susan  
Height: 1-3'  
Bloom: June-October | Yellow



Solidago flexicaulis  
Broad Leaf Or Zig Zag Goldenrod  
Height: 1-3"  
Bloom: June-October | Yellow



Iris versicolor  
Blue Flag  
Height: 3'  
Bloom: May-June | Blue  
Bioretention



Echinacea purpurea  
Purple Coneflower  
Height: 5'  
Bloom: June-August | Purplish-Pink



Leucanthemum x superbum 'Becky'  
Shasta Daisy  
Height: 4'  
Bloom: July-September | White  
with Yellow Center



Perovskia atriplicifolia  
Russian Sage  
Height: 5'  
Bloom: July-October | Lavender-Blue



Agastache 'Blue Fortune'  
Giant Hyssop  
Height: 2-3'  
Bloom: July-September | Blue



Geranium macrorrhizum  
Bigroot Cranesbill  
Height: 1'  
Bloom: April-July | Magenta



OWNER



LANDSCAPE ARCHITECT

Plant Materials - Perennials and Bulbs

cox graae + spack architects



November 2017  
copyright cox graae + spack architects 2017



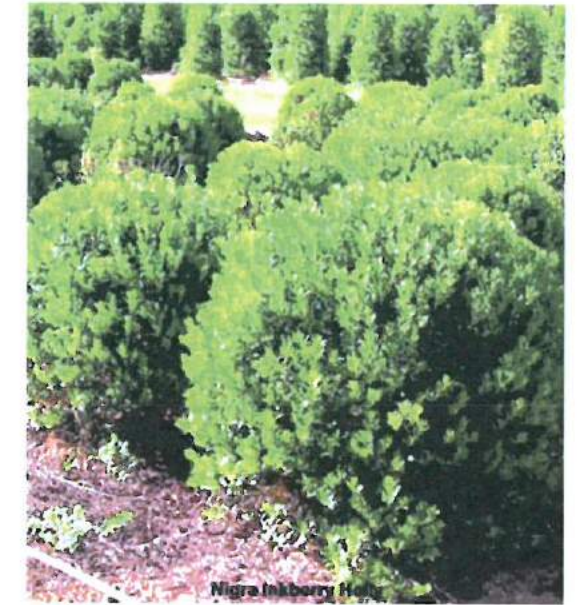
Mimulus ringens  
Allegheny Monkeyflower  
Height: 1-3'  
Bloom: June-September | Purple



Penstemon digitalis  
'Husker Red'  
Husker Red Penstemon  
Height: 2-3'  
Bloom: April-June | Purple



Fothergilla gardenii 'Mount Airy'  
Dwarf Fothergilla  
Height: 1.5-3'  
Bloom: April-May | White  
Fall Interest



Ilex glabra 'Nigra'  
Nigra Inkberry Holly  
Height: 5-8' Bloom: April |  
White Evergreen



Ilex verticillata  
Winterberry Holly  
Height: 3-12'  
Bloom: June-July | Green-white  
Year Round Interest



Kalmia angustifolia 'Little Linda'  
Mountain Laurel  
Height: 3'  
Bloom: May-June | White-pink  
Spring Interest



Myrica pennsylvanica  
Northern Bayberry  
Height: 6-8'  
Bloom: May | Yellow-green  
Winter Interest



Yellow Twig Dogwood  
Red Twig Dogwood  
Height: 6'  
Bloom: May-June | White

Cornus sericea 'Cardinal'  
Red Twig Dogwood  
Height: 9'  
Bloom: May-June | White