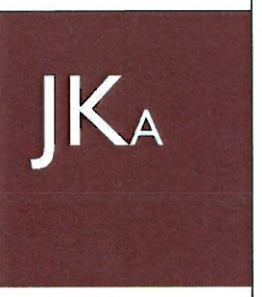


Two Parking Spaces  
 1 9'x19' Standard Parking Space  
 1 8'x18' Compact Parking Space  
 No Possibility to Turn Around on the Lot

1 PROPOSED WITE PLAN w/MITIGATION  
 1/8" = 1'-0"



OFFICIAL STAMPS



JONATHAN KUHN ARCHITECT  
 ONE P STREET NW  
 WASHINGTON DC 20001  
 T: 202.494.5061  
 JONATHAN@KUHNARCHITECT.COM  
 WWW.KUHNARCHITECT.COM

15TH ST CONDOMINIUMS  
 3043 15th St. NW  
 Washington, D.C. 20009

ISSUE RECORD

16.APRIL.2018

DDOT APPLICATION

SEAL

SHEET NAME  
 PROPOSED  
 SITE PLAN

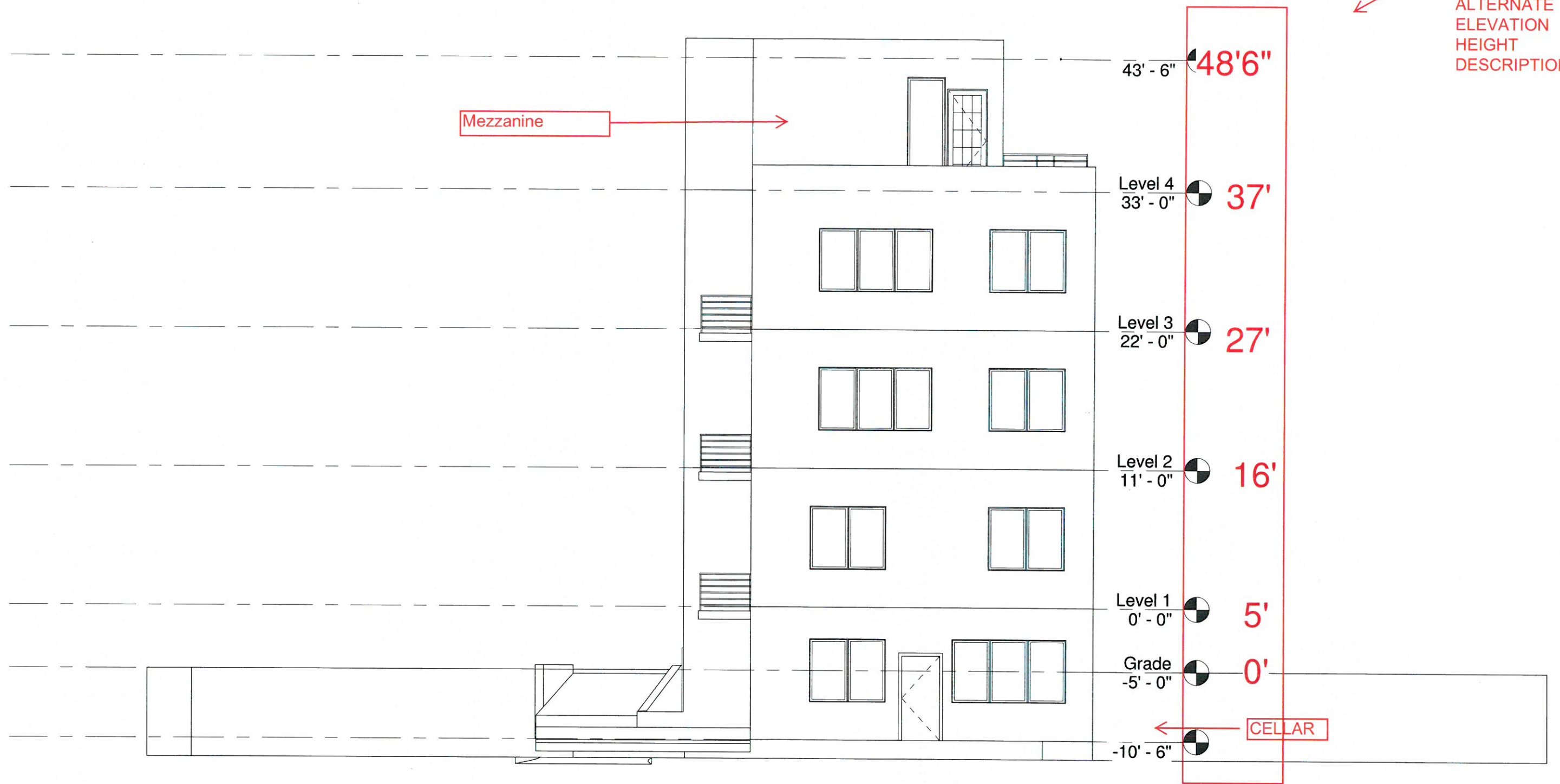
SCALE  
 1/8" = 1'-0"

SHEET NO.

A100



DIMENSIONS LISTED IN RED IS OFF GRADE; LISTED AS ALTERNATE ELEVATION HEIGHT DESCRIPTION



3043 15TH STREET NW  
WASHINGTON DC 20009  
9 UNIT CONDOMINIUM  
BUILDING  
3 - 1Bed-1Bath  
6 - 2Bed-2Bath  
2 - Parking Spaces

